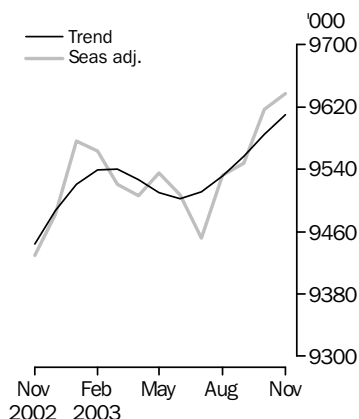


LABOUR FORCE

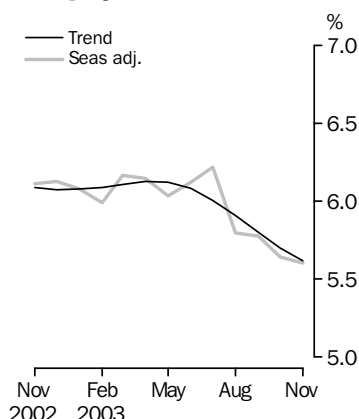
AUSTRALIA

EMBARGO: 11.30AM (CANBERRA TIME) THURS 11 DEC 2003

Employed persons



Unemployment rate



KEY FIGURES

	Oct 2003	Nov 2003	Oct 03 to Nov 03	Nov 02 to Nov 03
Trend				
Employed persons ('000)	9 584.9	9 610.5	25.6	1.8 %
Unemployed persons ('000)	579.7	572.4	-7.3	-6.5 %
Unemployment rate (%)	5.7	5.6	-0.1 pts	-0.5 pts
Participation rate (%)	63.6	63.6	0.0 pts	-0.3 pts
Seasonally Adjusted				
Employed persons ('000)	9 616.8	9 637.5	20.7	2.2 %
Unemployed persons ('000)	575.1	572.2	-2.9	-6.8 %
Unemployment rate (%)	5.6	5.6	0.0 pts	-0.5 pts
Participation rate (%)	63.8	63.7	0.0 pts	-0.1 pts

KEY POINTS

TREND ESTIMATES (MONTHLY CHANGE)

- EMPLOYMENT increased to 9,610,500.
- UNEMPLOYMENT decreased to 572,400.
- UNEMPLOYMENT RATE decreased to 5.6%.
- PARTICIPATION RATE remained at 63.6%.

SEASONALLY ADJUSTED ESTIMATES (MONTHLY CHANGE)

EMPLOYMENT

- increased by 20,700 to 9,637,500. Full-time employment increased by 27,900 to 6,912,600 and part-time employment decreased by 7,200 to 2,724,900.

UNEMPLOYMENT

- decreased by 2,900 to 572,200. The number of persons looking for full-time work decreased by 11,800 to 418,600 and the number of persons looking for part-time work increased by 8,900 to 153,600.

UNEMPLOYMENT RATE

- remained at 5.6%. The male unemployment rate decreased by 0.4 percentage points to 5.2% and the female rate increased by 0.4 percentage points to 6.1%.

PARTICIPATION RATE

- decreased marginally to 63.7%.

INQUIRIES

- For further information about these and related statistics, contact the National Information and Referral Service on 1300 135 070 or Craig Blair on (02) 6252 6525.

NOTES

FORTHCOMING ISSUES

ISSUE

RELEASE DATE

December 2003	15 January 2004
January 2004	12 February 2004
February 2004	11 March 2004
March 2004	8 April 2004
April 2004	13 May 2004
May 2004	10 June 2004

.....

CHANGES THIS MONTH

This publication and associated electronic products have been redesigned to improve the presentation of data for persons aged 15–19 years, to give greater focus to trend data, and to provide longer time series. Details of these changes are available in *Information Paper: Changes to Labour Force Survey Products* (cat. no. 6297.0) which was released on 23 October 2003. This information paper is available free from the ABS web site <<http://www.abs.gov.au>> (Themes - People, Labour).

CAI IMPLEMENTATION

The ABS has begun the progressive implementation of computer assisted interviewing (CAI) into the Labour Force Survey (LFS). Under CAI, interviewers record responses directly onto an electronic questionnaire in a laptop computer.

In both the October and November surveys, the CAI method was used on a random 10% sub-sample of survey interviews. The remaining 90% of interviews were conducted using the traditional 'pen and paper' method.

The change to the interviewing method is not expected to affect the published estimates in any meaningful way. Nonetheless, the ABS is monitoring the situation carefully and has conducted a range of analyses on both October and November data. These analyses have confirmed that any effect that the change in interview method in the 10% CAI sub-sample may have had on survey responses has not materially affected the aggregate estimates for either month.

The proportion of LFS interviews conducted using CAI will remain at 10% for the December and January surveys. Subject to further analysis continuing to confirm that the change in method is not having a significant impact on survey estimates, the use of CAI will increase to 40% of interviews in February 2004, then to 70% in April 2004, and finally to 100% in May 2004.

Users will continue to be informed of the progress of CAI implementation, including the results of further analyses, through updates in this publication.

Dennis Trewin
Australian Statistician

FORTHCOMING CHANGES

FORTHCOMING CHANGES

The ABS will be introducing a number of changes to labour force statistics over the next few months.

The first of these changes, to be introduced with the release of December 2003 LFS data, relates to the seasonal adjustment process used to produce LFS estimates. The second group of changes involves revisions to detailed original data at the unit record level which will flow through to published aggregated data. These changes will be introduced with the release of February 2004 LFS data.

The changes which will impact upon this publication and associated electronic products are detailed below. Further information on all the changes will be available in *Information Paper: Forthcoming Changes to Labour Force Statistics* (cat. no. 6292.0) to be released on 16 December 2003. This information paper will be available free from the ABS web site <<http://www.abs.gov.au>> (Themes - People, Labour).

SEASONAL ADJUSTMENT PROCESSES

From the December 2003 issue of this publication, the ABS will use concurrent seasonal adjustment in the LFS, replacing the forward factor adjustment process currently used to produce seasonally adjusted estimates. Concurrent seasonal adjustment uses original data up to and including the current month to produce seasonally adjusted and trend series, while the forward factor adjustment method only revises seasonal factors annually.

By increasing the frequency of seasonal reanalysis from annually to monthly, concurrent seasonal adjustment produces initial seasonally adjusted estimates that are usually closer on average to their final values, as any change in seasonality is picked up sooner. While revisions under the concurrent seasonal adjustment method are more frequent (monthly), the degree of revision is generally less than with the forward factor method of adjustment (where revisions are made annually).

Analysis has also shown that the proximity of LFS interviewing to holidays can have an effect on both people's availability for the survey and on their labour market involvement. A specific adjustment for this effect in respect of the January interview start date and the timing of Easter will be introduced to coincide with the introduction of concurrent seasonal adjustment.

REVISION OF POPULATION BENCHMARKS

LFS estimates of persons employed, unemployed and not in the labour force are calculated in such a way as to add up to independent estimates of the civilian population aged 15 and over (population benchmarks). These population benchmarks are revised every five years following the Census of Population and Housing. From February 2004, LFS estimates will be compiled using revised population benchmarks based on results from the 2001 Census. LFS estimates for the period January 1999 to January 2004 will also be revised based on the updated population benchmarks. The revised estimates will be available with the release of the February 2004 issue of this publication on 11 March 2004.

FORTHCOMING CHANGES *continued*

REVISION OF POPULATION BENCHMARKS *continued*

The population benchmarks currently used by the LFS are classified by state/territory of usual residence, capital city/rest of state, age and sex. In addition to these population benchmarks, from February 2004 the LFS will use population benchmarks for labour force region by sex. There are currently 68 labour force regions across Australia. The introduction of regional benchmarks will improve the quality of estimates for labour force regions without compromising the quality of estimates at national, state and territory levels.

LFS estimates for labour force regions (available each month in electronic products) will be revised back to January 1999.

DEFINITIONAL CHANGE

In February 2004, the ABS will introduce a minor change to the definition of unemployed persons. The change relates to a small group of persons ('future starters') who had not actively looked for work because they were waiting to start a new job within four weeks from the end of the survey reference week, and would have started in the reference week if the job had been available then. These persons are currently classified as not in the labour force. From February 2004 they will be classified as unemployed, in line with International Labour Organisation guidelines.

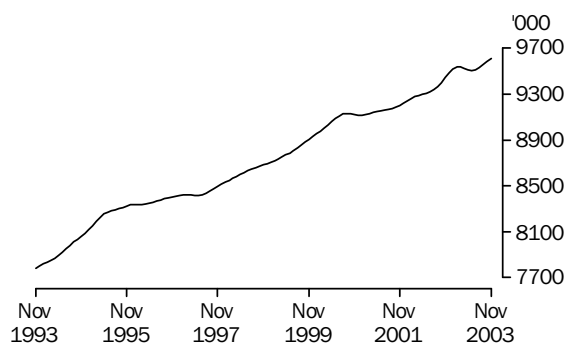
Data to support this change has been available since the new LFS questionnaire was introduced in April 2001. However, the ABS announced then that, due to concerns that such a change could result in a break in some core labour force series, implementation of the change would be deferred until February 2004 (see *Information Paper: Implementing the Redesigned Labour Force Survey Questionnaire* (cat. no. 6295.0) which was released on 3 May 2001). This timing coincides with the five-yearly revision of population benchmarks mentioned above.

LFS estimates will be revised back to April 2001 to reflect this change. Revised estimates will be available with the release of the February 2004 issue of this publication on 11 March 2004. Analysis has shown that the unemployment rate will increase as a result of this definitional change by an average of 0.1 - 0.2 percentage points. A small break will remain in the unemployed persons and unemployment rate series at April 2001.

PRINCIPAL LABOUR FORCE SERIES TREND ESTIMATES

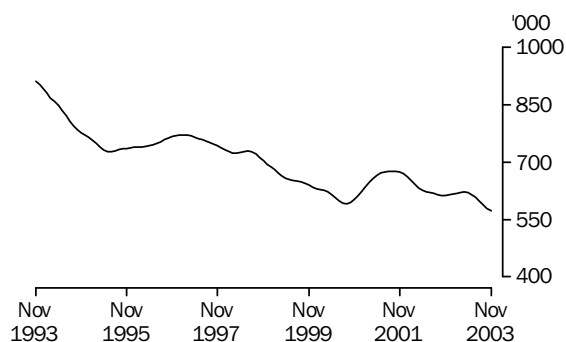
EMPLOYED PERSONS

The trend estimate of employed persons generally rose from a low of 7,634,000 in January 1993 to 9,129,300 in September 2000. The trend estimate then fell slightly to 9,112,900 in December 2000, before rising to 9,540,300 in March 2003. The trend estimate then fell for three months, before rising to stand at 9,610,500 in November 2003.



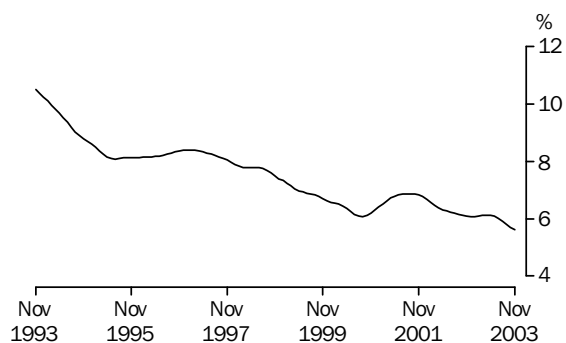
UNEMPLOYED PERSONS

The trend estimate of unemployed persons fell rapidly from 920,600 in September 1993 to 728,100 in July 1995. The trend estimate then rose to 771,800 in February 1997, before falling to 590,900 in September 2000. After rising to 675,900 in October 2001, the trend estimate has generally fallen to stand at 572,400 in November 2003.



UNEMPLOYMENT RATE

The trend unemployment rate fell rapidly from 10.7% in August 1993 to 8.1% in July 1995. The trend estimate then rose slowly, reaching 8.4% in February 1997, before falling to 6.1% in September 2000. After rising to 6.9% in September 2001, the trend estimate has generally fallen to stand at 5.6% in November 2003.



LABOUR FORCE STATUS (AGED 15 & OVER): Trend

	EMPLOYED			UNEMPLOYED			UNEMPLOYMENT RATE		
	Full time	Part time	Total	Looking for f/t work	Total	Labour force	Looking for f/t work	Total	Participation rate
	'000	'000	'000	'000	'000	'000	%	%	%
MALES									
November 2000	4 433.5	677.5	5 110.9	301.4	354.9	5 465.8	6.4	6.5	72.5
November 2001	4 412.8	732.0	5 144.8	325.9	388.1	5 532.9	6.9	7.0	72.4
2002									
November	4 463.4	781.5	5 245.0	280.5	343.9	5 588.8	5.9	6.2	72.0
December	4 481.7	780.1	5 261.8	281.8	344.8	5 606.6	5.9	6.2	72.2
2003									
January	4 497.6	778.1	5 275.7	284.2	346.2	5 622.0	5.9	6.2	72.3
February	4 507.3	775.6	5 282.9	286.7	348.0	5 631.0	6.0	6.2	72.3
March	4 509.2	773.6	5 282.8	288.8	349.7	5 632.4	6.0	6.2	72.2
April	4 505.1	772.4	5 277.5	289.3	349.7	5 627.3	6.0	6.2	72.0
May	4 500.6	772.3	5 272.9	287.9	347.8	5 620.7	6.0	6.2	71.8
June	4 502.4	773.0	5 275.3	284.2	343.3	5 618.6	5.9	6.1	71.7
July	4 512.8	774.4	5 287.2	278.4	336.2	5 623.4	5.8	6.0	71.7
August	4 529.1	776.9	5 306.0	271.3	327.4	5 633.4	5.7	5.8	71.7
September	4 546.9	780.5	5 327.3	264.2	318.6	5 645.9	5.5	5.6	71.7
October	4 564.1	784.4	5 348.5	257.4	310.4	5 658.8	5.3	5.5	71.8
November	4 578.2	788.4	5 366.6	251.7	303.9	5 670.5	5.2	5.4	71.9
FEMALES									
November 2000	2 269.3	1 738.4	4 007.7	156.7	247.0	4 254.7	6.5	5.8	54.9
November 2001	2 232.4	1 825.0	4 057.3	186.3	286.8	4 344.1	7.7	6.6	55.3
2002									
November	2 291.4	1 907.8	4 199.2	170.8	268.3	4 467.5	6.9	6.0	56.1
December	2 300.7	1 924.1	4 224.8	173.6	269.0	4 493.8	7.0	6.0	56.3
2003									
January	2 305.8	1 939.3	4 245.1	177.0	269.9	4 515.0	7.1	6.0	56.5
February	2 306.0	1 950.3	4 256.3	179.7	270.5	4 526.8	7.2	6.0	56.6
March	2 300.6	1 956.9	4 257.6	181.3	271.1	4 528.7	7.3	6.0	56.5
April	2 291.1	1 958.1	4 249.2	182.0	271.9	4 521.1	7.4	6.0	56.3
May	2 282.3	1 954.6	4 236.9	181.8	272.3	4 509.2	7.4	6.0	56.1
June	2 279.2	1 947.8	4 227.0	181.0	272.4	4 499.4	7.4	6.1	55.9
July	2 282.8	1 940.6	4 223.5	179.7	271.8	4 495.3	7.3	6.0	55.8
August	2 290.8	1 934.3	4 225.1	178.2	270.9	4 496.0	7.2	6.0	55.7
September	2 300.1	1 929.7	4 229.8	176.6	270.0	4 499.8	7.1	6.0	55.6
October	2 309.4	1 927.0	4 236.5	175.1	269.3	4 505.8	7.0	6.0	55.6
November	2 318.2	1 925.7	4 243.9	173.5	268.5	4 512.4	7.0	5.9	55.6
PERSONS									
November 2000	6 702.8	2 415.8	9 118.6	458.1	601.9	9 720.5	6.4	6.2	63.6
November 2001	6 645.2	2 557.0	9 202.2	512.1	674.9	9 877.0	7.2	6.8	63.7
2002									
November	6 754.8	2 689.3	9 444.2	451.3	612.1	10 056.3	6.3	6.1	63.9
December	6 782.4	2 704.2	9 486.6	455.4	613.8	10 100.5	6.3	6.1	64.1
2003									
January	6 803.4	2 717.4	9 520.8	461.1	616.2	10 137.0	6.3	6.1	64.3
February	6 813.3	2 725.9	9 539.3	466.4	618.5	10 157.8	6.4	6.1	64.3
March	6 809.8	2 730.5	9 540.3	470.1	620.8	10 161.1	6.5	6.1	64.2
April	6 796.2	2 730.5	9 526.8	471.2	621.6	10 148.4	6.5	6.1	64.1
May	6 782.9	2 726.9	9 509.8	469.6	620.1	10 129.9	6.5	6.1	63.9
June	6 781.6	2 720.8	9 502.3	465.2	615.7	10 118.0	6.4	6.1	63.7
July	6 795.6	2 715.1	9 510.7	458.1	608.0	10 118.7	6.3	6.0	63.6
August	6 819.9	2 711.3	9 531.1	449.6	598.4	10 129.5	6.2	5.9	63.6
September	6 846.9	2 710.2	9 557.1	440.8	588.6	10 145.7	6.0	5.8	63.6
October	6 873.5	2 711.4	9 584.9	432.6	579.7	10 164.6	5.9	5.7	63.6
November	6 896.4	2 714.1	9 610.5	425.1	572.4	10 182.8	5.8	5.6	63.6

LABOUR FORCE STATUS (AGED 15 & OVER): Seasonally Adjusted

	EMPLOYED			UNEMPLOYED			UNEMPLOYMENT RATE		
	Full time	Part time	Total	Looking for f/t work	Total	Labour force	Looking for f/t work	Total	Participation rate
MALES									
November 2000	4 437.2	671.8	5 109.0	304.7	357.3	5 466.3	6.4	6.5	72.5
November 2001	4 408.5	732.8	5 141.3	327.2	387.9	5 529.3	6.9	7.0	72.3
2002									
November	4 455.5	788.6	5 244.2	278.7	342.1	5 586.3	5.9	6.1	72.0
December	4 472.7	784.6	5 257.3	284.8	348.8	5 606.2	6.0	6.2	72.2
2003									
January	4 523.2	772.3	5 295.5	286.9	351.5	5 646.9	6.0	6.2	72.6
February	4 519.9	765.5	5 285.4	282.1	344.2	5 629.7	5.9	6.1	72.3
March	4 515.6	781.7	5 297.3	288.0	341.1	5 638.4	6.0	6.0	72.3
April	4 487.7	776.0	5 263.7	292.6	357.2	5 621.0	6.1	6.4	71.9
May	4 510.7	767.2	5 277.9	287.7	346.1	5 624.0	6.0	6.2	71.9
June	4 492.7	771.7	5 264.4	288.3	350.3	5 614.7	6.0	6.2	71.7
July	4 488.4	780.9	5 269.4	280.5	341.3	5 610.7	5.9	6.1	71.5
August	4 537.0	769.5	5 306.5	266.2	318.6	5 625.1	5.5	5.7	71.6
September	4 551.2	777.4	5 328.6	262.6	315.8	5 644.4	5.5	5.6	71.7
October	4 574.9	788.1	5 363.0	264.9	316.9	5 679.9	5.5	5.6	72.0
November	4 584.4	793.6	5 378.0	242.3	296.4	5 674.4	5.0	5.2	71.8
FEMALES									
November 2000	2 271.7	1 711.4	3 983.1	161.9	253.5	4 236.7	6.7	6.0	54.6
November 2001	2 234.4	1 823.1	4 057.5	180.0	280.2	4 337.7	7.5	6.5	55.2
2002									
November	2 280.3	1 905.3	4 185.6	176.3	272.0	4 457.6	7.2	6.1	55.9
December	2 307.1	1 917.4	4 224.5	170.8	270.4	4 494.8	6.9	6.0	56.3
2003									
January	2 318.9	1 961.4	4 280.3	179.9	268.2	4 548.6	7.2	5.9	56.9
February	2 332.2	1 945.9	4 278.1	176.1	265.5	4 543.6	7.0	5.8	56.8
March	2 271.8	1 951.6	4 223.4	193.5	284.6	4 508.0	7.8	6.3	56.2
April	2 287.7	1 955.0	4 242.7	175.4	265.5	4 508.2	7.1	5.9	56.2
May	2 301.9	1 955.6	4 257.5	175.3	266.5	4 523.9	7.1	5.9	56.3
June	2 265.9	1 977.2	4 243.1	184.7	269.7	4 512.8	7.5	6.0	56.1
July	2 269.5	1 913.4	4 182.9	185.5	285.6	4 468.5	7.6	6.4	55.4
August	2 284.5	1 942.0	4 226.4	173.2	268.2	4 494.7	7.0	6.0	55.7
September	2 313.5	1 905.5	4 219.0	183.0	269.6	4 488.6	7.3	6.0	55.5
October	2 309.8	1 944.0	4 253.8	165.5	258.2	4 512.0	6.7	5.7	55.7
November	2 328.1	1 931.4	4 259.5	176.3	275.8	4 535.3	7.0	6.1	55.9
PERSONS									
November 2000	6 708.9	2 383.2	9 092.1	466.5	610.9	9 703.0	6.5	6.3	63.4
November 2001	6 642.9	2 555.9	9 198.8	507.2	668.1	9 867.0	7.1	6.8	63.7
2002									
November	6 735.9	2 693.9	9 429.8	455.0	614.1	10 043.9	6.3	6.1	63.9
December	6 779.8	2 702.0	9 481.8	455.6	619.2	10 101.0	6.3	6.1	64.1
2003									
January	6 842.1	2 733.7	9 575.8	466.8	619.7	10 195.5	6.4	6.1	64.7
February	6 852.1	2 711.4	9 563.5	458.2	609.7	10 173.3	6.3	6.0	64.4
March	6 787.4	2 733.3	9 520.7	481.5	625.6	10 146.3	6.6	6.2	64.1
April	6 775.4	2 731.0	9 506.4	468.0	622.7	10 129.1	6.5	6.1	64.0
May	6 812.6	2 722.8	9 535.4	463.0	612.5	10 147.9	6.4	6.0	64.0
June	6 758.6	2 748.9	9 507.5	473.0	620.0	10 127.5	6.5	6.1	63.8
July	6 757.9	2 694.4	9 452.3	465.9	626.9	10 079.2	6.5	6.2	63.4
August	6 821.4	2 711.5	9 532.9	439.4	586.9	10 119.8	6.1	5.8	63.5
September	6 864.8	2 682.9	9 547.7	445.5	585.4	10 133.0	6.1	5.8	63.5
October	6 884.7	2 732.2	9 616.8	430.4	575.1	10 191.9	5.9	5.6	63.8
November	6 912.6	2 724.9	9 637.5	418.6	572.2	10 209.7	5.7	5.6	63.7

LABOUR FORCE STATUS (AGED 15 & OVER): Original

	EMPLOYED			UNEMPLOYED			UNEMPLOYMENT RATE				
	Full time	Part time	Total	Looking for f/t work	Total	Labour Force	Not in labour force	Civilian population aged 15 and over	Looking for f/t work	Total	Participation rate
	'000	'000	'000	'000	'000	'000	'000	'000	%	%	%
MALES											
November 2000	4 432.0	660.6	5 092.6	296.1	343.1	5 435.7	2 102.3	7 538.0	6.3	6.3	72.1
November 2001	4 403.3	720.6	5 123.9	317.3	371.4	5 495.3	2 148.1	7 643.3	6.7	6.8	71.9
2002											
November	4 450.4	775.3	5 225.7	270.0	326.1	5 551.8	2 206.0	7 757.8	5.7	5.9	71.6
December	4 556.1	767.7	5 323.8	285.8	353.7	5 677.5	2 089.9	7 767.4	5.9	6.2	73.1
2003											
January	4 511.4	736.0	5 247.3	316.7	380.6	5 627.9	2 151.2	7 779.1	6.6	6.8	72.3
February	4 532.8	739.5	5 272.2	309.3	376.4	5 648.6	2 142.1	7 790.7	6.4	6.7	72.5
March	4 493.9	786.5	5 280.4	289.6	349.8	5 630.2	2 172.2	7 802.4	6.1	6.2	72.2
April	4 468.8	794.8	5 263.6	288.2	357.6	5 621.2	2 191.5	7 812.7	6.1	6.4	71.9
May	4 488.8	780.9	5 269.7	283.7	344.0	5 613.7	2 209.4	7 823.1	5.9	6.1	71.8
June	4 473.0	800.9	5 274.0	282.2	338.7	5 612.7	2 220.8	7 833.5	5.9	6.0	71.6
July	4 503.9	787.6	5 291.5	261.9	314.6	5 606.1	2 239.1	7 845.2	5.5	5.6	71.5
August	4 490.8	780.3	5 271.0	258.9	309.2	5 580.3	2 276.6	7 856.9	5.5	5.5	71.0
September	4 582.3	776.0	5 358.3	264.2	322.3	5 680.5	2 188.1	7 868.6	5.5	5.7	72.2
October	4 576.9	798.4	5 375.3	253.7	301.6	5 676.9	2 207.4	7 884.3	5.3	5.3	72.0
November	4 578.5	780.1	5 358.7	234.6	282.3	5 641.0	2 259.0	7 900.0	4.9	5.0	71.4
FEMALES											
November 2000	2 267.3	1 726.8	3 994.1	152.8	234.0	4 228.1	3 528.1	7 756.2	6.3	5.5	54.5
November 2001	2 229.4	1 837.1	4 066.5	170.1	258.1	4 324.6	3 529.8	7 854.3	7.1	6.0	55.1
2002											
November	2 276.2	1 918.8	4 195.0	166.8	250.5	4 445.5	3 523.7	7 969.2	6.8	5.6	55.8
December	2 354.8	1 912.9	4 267.7	175.0	270.5	4 538.2	3 440.8	7 979.0	6.9	6.0	56.9
2003											
January	2 332.3	1 860.0	4 192.3	191.3	272.2	4 464.5	3 526.6	7 991.1	7.6	6.1	55.9
February	2 335.6	1 908.1	4 243.8	199.4	303.3	4 547.1	3 456.1	8 003.1	7.9	6.7	56.8
March	2 268.2	1 950.0	4 218.2	200.1	307.0	4 525.2	3 490.0	8 015.2	8.1	6.8	56.5
April	2 261.8	1 972.2	4 234.0	176.9	272.2	4 506.2	3 520.0	8 026.1	7.3	6.0	56.1
May	2 276.7	1 972.2	4 248.9	182.8	276.9	4 525.8	3 511.2	8 037.1	7.4	6.1	56.3
June	2 237.4	2 012.3	4 249.6	179.1	263.6	4 513.3	3 534.8	8 048.0	7.4	5.8	56.1
July	2 294.7	1 921.7	4 216.4	165.4	253.4	4 469.7	3 591.2	8 060.9	6.7	5.7	55.4
August	2 247.2	1 954.2	4 201.4	163.4	254.3	4 455.6	3 618.2	8 073.8	6.8	5.7	55.2
September	2 346.5	1 941.3	4 287.8	178.8	268.5	4 556.3	3 530.4	8 086.7	7.1	5.9	56.3
October	2 312.0	1 950.1	4 262.0	158.9	248.1	4 510.1	3 592.6	8 102.7	6.4	5.5	55.7
November	2 324.2	1 944.5	4 268.7	166.8	253.7	4 522.4	3 596.2	8 118.6	6.7	5.6	55.7
PERSONS											
November 2000	6 699.3	2 387.4	9 086.7	449.0	577.1	9 663.8	5 630.4	15 294.3	6.3	6.0	63.2
November 2001	6 632.7	2 557.7	9 190.4	487.5	629.5	9 819.8	5 677.8	15 497.7	6.8	6.4	63.4
2002											
November	6 726.6	2 694.1	9 420.7	436.8	576.6	9 997.3	5 729.7	15 727.0	6.1	5.8	63.6
December	6 910.9	2 680.7	9 591.5	460.7	624.1	10 215.7	5 530.7	15 746.4	6.2	6.1	64.9
2003											
January	6 843.7	2 596.0	9 439.7	507.9	652.7	10 092.4	5 677.7	15 770.1	6.9	6.5	64.0
February	6 868.4	2 647.6	9 516.0	508.7	679.7	10 195.7	5 598.1	15 793.8	6.9	6.7	64.6
March	6 762.1	2 736.5	9 498.6	489.8	656.8	10 155.4	5 662.2	15 817.6	6.8	6.5	64.2
April	6 730.6	2 767.1	9 497.7	465.1	629.7	10 127.4	5 711.5	15 838.9	6.5	6.2	63.9
May	6 765.5	2 753.1	9 518.6	466.5	620.9	10 139.5	5 720.6	15 860.2	6.5	6.1	63.9
June	6 710.4	2 813.2	9 523.6	461.3	602.4	10 125.9	5 755.6	15 881.6	6.4	5.9	63.8
July	6 798.6	2 709.2	9 507.9	427.3	568.0	10 075.9	5 830.3	15 906.1	5.9	5.6	63.3
August	6 738.0	2 734.4	9 472.4	422.3	563.5	10 035.9	5 894.8	15 930.7	5.9	5.6	63.0
September	6 928.8	2 717.2	9 646.1	443.0	590.7	10 236.8	5 718.5	15 955.3	6.0	5.8	64.2
October	6 888.8	2 748.5	9 637.3	412.6	549.7	10 187.0	5 800.0	15 987.0	5.7	5.4	63.7
November	6 902.7	2 724.7	9 627.4	401.4	536.1	10 163.5	5 855.1	16 018.6	5.5	5.3	63.4

LABOUR FORCE STATUS (AGED 15 & OVER)—New South Wales

	TREND					SEASONALLY ADJUSTED					
	<i>Employed full time</i>	<i>Total employed</i>	<i>Total unemp- loyed</i>	<i>Unemp- loyment rate</i>	<i>Partici- pation rate</i>	<i>Employed full time</i>	<i>Total employed</i>	<i>Total unemp- loyed</i>	<i>Unemp- loyment rate</i>	<i>Partici- pation rate</i>	<i>Civilian population</i>
	'000	'000	'000	%	%	'000	'000	'000	%	%	'000
MALES											
November 2000	1 493.7	1 713.0	104.4	5.7	71.3	1 494.0	1 712.4	102.9	5.7	71.3	2 547.4
November 2001	1 487.3	1 721.7	114.9	6.3	71.3	1 477.9	1 720.8	119.2	6.5	71.4	2 577.3
2002											
November	1 504.7	1 755.1	107.0	5.7	71.3	1 502.7	1 754.6	107.1	5.8	71.3	2 610.5
December	1 508.3	1 760.2	108.0	5.8	71.5	1 505.6	1 748.3	111.8	6.0	71.2	2 612.9
2003											
January	1 510.6	1 764.1	109.8	5.9	71.6	1 512.7	1 769.2	111.9	6.0	71.9	2 615.5
February	1 510.6	1 765.0	112.1	6.0	71.7	1 517.3	1 774.6	110.7	5.9	72.0	2 618.1
March	1 508.0	1 762.6	114.5	6.1	71.6	1 515.9	1 771.9	105.7	5.6	71.6	2 620.6
April	1 504.4	1 757.4	116.2	6.2	71.4	1 496.0	1 748.1	120.9	6.5	71.3	2 622.7
May	1 501.8	1 751.9	116.4	6.2	71.2	1 501.5	1 749.7	119.8	6.4	71.2	2 624.8
June	1 502.9	1 749.4	114.7	6.2	71.0	1 502.6	1 755.5	117.4	6.3	71.3	2 626.8
July	1 508.2	1 752.0	111.3	6.0	70.8	1 489.4	1 731.6	115.4	6.2	70.2	2 630.0
August	1 516.4	1 759.0	106.6	5.7	70.8	1 528.5	1 765.6	99.7	5.3	70.8	2 633.1
September	1 525.3	1 767.9	102.0	5.5	70.9	1 527.4	1 760.6	99.7	5.4	70.6	2 636.2
October	1 533.7	1 777.1	97.9	5.2	71.0	1 535.4	1 789.2	101.3	5.4	71.6	2 640.0
November	1 540.5	1 785.3	94.7	5.0	71.2	1 543.6	1 791.6	92.8	4.9	71.3	2 643.8
FEMALES											
November 2000	788.9	1 330.1	70.3	5.0	53.3	791.0	1 320.4	72.1	5.2	53.0	2 624.9
November 2001	769.7	1 345.0	91.1	6.3	54.2	765.1	1 339.3	86.5	6.1	53.8	2 649.2
2002											
November	779.8	1 378.8	86.4	5.9	54.7	782.6	1 386.9	91.0	6.2	55.1	2 680.2
December	783.3	1 388.8	87.6	5.9	55.0	786.7	1 388.1	84.5	5.7	54.9	2 682.6
2003											
January	786.1	1 397.6	88.1	5.9	55.3	785.0	1 410.8	89.6	6.0	55.9	2 685.4
February	787.0	1 403.1	87.8	5.9	55.5	801.6	1 404.5	89.2	6.0	55.6	2 688.1
March	785.5	1 404.2	87.1	5.8	55.4	784.5	1 395.4	90.3	6.1	55.2	2 690.8
April	781.9	1 401.9	86.6	5.8	55.3	768.1	1 402.9	81.7	5.5	55.1	2 692.9
May	778.4	1 398.1	86.3	5.8	55.1	784.9	1 404.3	84.7	5.7	55.3	2 695.1
June	777.3	1 395.1	86.5	5.8	54.9	778.5	1 396.4	83.0	5.6	54.8	2 697.3
July	778.7	1 393.7	86.8	5.9	54.8	770.2	1 384.0	98.3	6.6	54.9	2 700.7
August	781.9	1 393.8	87.2	5.9	54.8	784.8	1 390.6	81.0	5.5	54.4	2 704.2
September	785.5	1 394.9	87.4	5.9	54.7	785.5	1 398.6	87.6	5.9	54.9	2 707.6
October	789.2	1 396.6	87.5	5.9	54.7	788.9	1 395.9	86.1	5.8	54.7	2 711.7
November	791.9	1 398.8	87.3	5.9	54.8	797.5	1 404.9	88.6	5.9	55.0	2 715.7
PERSONS											
November 2000	2 282.5	3 043.1	174.7	5.4	62.2	2 285.0	3 032.9	175.0	5.5	62.0	5 172.4
November 2001	2 257.0	3 066.7	206.0	6.3	62.6	2 243.0	3 060.1	205.7	6.3	62.5	5 226.5
2002											
November	2 284.5	3 133.9	193.4	5.8	62.9	2 285.3	3 141.5	198.1	5.9	63.1	5 290.7
December	2 291.6	3 149.0	195.7	5.9	63.2	2 292.3	3 136.4	196.3	5.9	62.9	5 295.6
2003											
January	2 296.7	3 161.7	197.9	5.9	63.4	2 297.7	3 180.0	201.5	6.0	63.8	5 300.8
February	2 297.6	3 168.1	199.9	5.9	63.5	2 318.9	3 179.1	199.9	5.9	63.7	5 306.1
March	2 293.5	3 166.8	201.6	6.0	63.4	2 300.3	3 167.3	196.0	5.8	63.3	5 311.4
April	2 286.3	3 159.3	202.7	6.0	63.3	2 264.2	3 151.0	202.5	6.0	63.1	5 315.6
May	2 280.2	3 150.1	202.7	6.0	63.0	2 286.4	3 154.0	204.5	6.1	63.1	5 319.9
June	2 280.2	3 144.5	201.2	6.0	62.8	2 281.1	3 151.9	200.4	6.0	63.0	5 324.1
July	2 286.9	3 145.7	198.1	5.9	62.7	2 259.6	3 115.7	213.7	6.4	62.5	5 330.7
August	2 298.3	3 152.8	193.8	5.8	62.7	2 313.3	3 156.2	180.8	5.4	62.5	5 337.3
September	2 310.8	3 162.7	189.4	5.6	62.7	2 312.9	3 159.2	187.3	5.6	62.6	5 343.8
October	2 322.9	3 173.7	185.4	5.5	62.8	2 324.3	3 185.1	187.4	5.6	63.0	5 351.7
November	2 332.5	3 184.1	182.0	5.4	62.9	2 341.0	3 196.5	181.4	5.4	63.0	5 359.5

LABOUR FORCE STATUS (AGED 15 & OVER)—Victoria

TREND

SEASONALLY ADJUSTED

<i>Employed full time</i>	<i>Total employed</i>	<i>Total unemp- loyed</i>	<i>Unemp- loyment rate</i>	<i>Partici- pation rate</i>	<i>Employed full time</i>	<i>Total employed</i>	<i>Total unemp- loyed</i>	<i>Unemp- loyment rate</i>	<i>Partici- pation rate</i>	<i>Civilian population</i>
'000	'000	'000	%	%	'000	'000	'000	%	%	'000

MALES

November 2000	1 127.0	1 299.3	83.5	6.0	73.5	1 132.8	1 302.2	85.1	6.1	73.8	1 880.1
November 2001	1 123.4	1 306.4	92.5	6.6	73.1	1 125.3	1 306.1	88.1	6.3	72.9	1 913.1
2002											
November	1 121.0	1 314.9	82.6	5.9	71.8	1 120.0	1 315.0	80.5	5.8	71.7	1 945.6
December	1 125.2	1 318.9	81.6	5.8	71.9	1 130.4	1 332.6	82.9	5.9	72.6	1 948.7
2003											
January	1 128.6	1 322.1	80.5	5.7	71.9	1 135.9	1 324.8	82.6	5.9	72.1	1 951.6
February	1 130.2	1 323.5	79.9	5.7	71.8	1 128.4	1 315.1	79.3	5.7	71.3	1 954.5
March	1 129.9	1 323.2	80.0	5.7	71.7	1 135.5	1 329.6	73.5	5.2	71.7	1 957.4
April	1 128.8	1 322.7	80.3	5.7	71.6	1 124.0	1 322.3	82.4	5.9	71.7	1 959.8
May	1 128.7	1 323.9	80.6	5.7	71.6	1 122.3	1 321.4	82.9	5.9	71.6	1 962.2
June	1 130.9	1 328.2	80.2	5.7	71.7	1 131.2	1 321.6	81.0	5.8	71.4	1 964.6
July	1 134.5	1 334.3	78.7	5.6	71.8	1 135.0	1 334.7	81.6	5.8	72.0	1 967.6
August	1 138.3	1 340.8	76.4	5.4	71.9	1 139.0	1 339.2	73.7	5.2	71.7	1 970.6
September	1 141.4	1 347.0	73.7	5.2	72.0	1 143.9	1 357.0	73.3	5.1	72.5	1 973.6
October	1 143.7	1 352.2	71.1	5.0	72.0	1 150.1	1 353.4	72.1	5.1	72.1	1 978.0
November	1 144.9	1 356.2	69.0	4.8	72.0	1 136.2	1 351.3	66.9	4.7	71.5	1 982.3

FEMALES

November 2000	564.5	1 005.0	59.3	5.6	54.4	564.4	999.7	58.1	5.5	54.0	1 957.8
November 2001	562.0	1 019.5	69.9	6.4	54.9	564.2	1 022.7	70.2	6.4	55.1	1 984.8
2002											
November	585.3	1 072.5	60.7	5.4	56.2	583.8	1 067.3	63.2	5.6	56.1	2 014.8
December	586.6	1 080.4	60.2	5.3	56.5	588.9	1 075.8	62.3	5.5	56.4	2 017.5
2003											
January	586.0	1 085.4	60.3	5.3	56.7	587.5	1 097.9	59.6	5.1	57.3	2 020.2
February	583.6	1 086.8	61.3	5.3	56.8	590.8	1 098.9	52.5	4.6	56.9	2 022.9
March	579.4	1 083.8	63.2	5.5	56.6	565.2	1 072.5	65.9	5.8	56.2	2 025.6
April	573.7	1 076.9	65.1	5.7	56.3	584.0	1 074.8	67.5	5.9	56.3	2 028.2
May	567.6	1 068.2	66.3	5.8	55.9	571.0	1 073.2	68.5	6.0	56.2	2 030.9
June	563.0	1 060.6	66.4	5.9	55.4	555.7	1 062.1	68.5	6.1	55.6	2 033.6
July	561.2	1 056.1	65.5	5.8	55.1	559.9	1 049.3	63.5	5.7	54.6	2 036.8
August	561.8	1 054.5	64.3	5.8	54.8	557.6	1 047.6	64.5	5.8	54.5	2 040.1
September	564.2	1 054.5	63.7	5.7	54.7	563.5	1 056.1	59.0	5.3	54.6	2 043.3
October	567.5	1 055.8	63.4	5.7	54.7	565.6	1 054.2	65.9	5.9	54.7	2 047.5
November	572.2	1 058.0	63.5	5.7	54.7	584.7	1 069.3	65.5	5.8	55.3	2 051.7

PERSONS

November 2000	1 691.5	2 304.3	142.8	5.8	63.8	1 697.2	2 301.9	143.2	5.9	63.7	3 837.9
November 2001	1 685.5	2 325.9	162.4	6.5	63.8	1 689.6	2 328.8	158.3	6.4	63.8	3 897.9
2002											
November	1 706.2	2 387.4	143.3	5.7	63.9	1 703.9	2 382.3	143.7	5.7	63.8	3 960.4
December	1 711.8	2 399.3	141.7	5.6	64.1	1 719.4	2 408.4	145.2	5.7	64.4	3 966.2
2003											
January	1 714.6	2 407.5	140.8	5.5	64.2	1 723.4	2 422.7	142.2	5.5	64.6	3 971.8
February	1 713.8	2 410.3	141.1	5.5	64.2	1 719.2	2 414.0	131.8	5.2	64.0	3 977.4
March	1 709.4	2 407.0	143.1	5.6	64.0	1 700.7	2 402.1	139.4	5.5	63.8	3 983.0
April	1 702.5	2 399.6	145.4	5.7	63.8	1 708.0	2 397.1	149.9	5.9	63.9	3 988.1
May	1 696.2	2 392.1	146.9	5.8	63.6	1 693.3	2 394.6	151.4	5.9	63.8	3 993.1
June	1 693.9	2 388.8	146.6	5.8	63.4	1 686.9	2 383.7	149.5	5.9	63.4	3 998.2
July	1 695.7	2 390.4	144.3	5.7	63.3	1 694.9	2 384.0	145.1	5.7	63.2	4 004.5
August	1 700.2	2 395.3	140.8	5.5	63.2	1 696.7	2 386.8	138.2	5.5	63.0	4 010.7
September	1 705.7	2 401.5	137.4	5.4	63.2	1 707.4	2 413.1	132.3	5.2	63.4	4 017.0
October	1 711.2	2 408.0	134.6	5.3	63.2	1 715.7	2 407.6	138.0	5.4	63.2	4 025.5
November	1 717.1	2 414.2	132.5	5.2	63.2	1 720.9	2 420.6	132.4	5.2	63.3	4 034.0

LABOUR FORCE STATUS (AGED 15 & OVER)—Queensland

	TREND					SEASONALLY ADJUSTED					
	<i>Employed full time</i>	<i>Total employed</i>	<i>Total unemp- loyed</i>	<i>Unemp- loyment rate</i>	<i>Partici- pation rate</i>	<i>Employed full time</i>	<i>Total employed</i>	<i>Total unemp- loyed</i>	<i>Unemp- loyment rate</i>	<i>Partici- pation rate</i>	<i>Civilian population</i>
	'000	'000	'000	%	%	'000	'000	'000	%	%	'000
MALES											
November 2000	819.4	942.9	78.2	7.7	73.0	817.2	940.0	79.5	7.8	72.9	1 398.1
November 2001	815.7	956.2	87.1	8.4	73.3	813.0	953.5	86.8	8.3	73.1	1 422.8
2002											
November	834.0	989.3	69.9	6.6	73.0	832.0	990.7	69.0	6.5	73.0	1 451.7
December	838.2	992.6	70.6	6.6	73.1	829.9	991.2	71.7	6.7	73.1	1 454.2
2003											
January	842.4	995.0	71.2	6.7	73.1	853.0	1 002.4	69.9	6.5	73.5	1 458.2
February	845.0	995.8	71.4	6.7	73.0	848.9	996.1	67.9	6.4	72.8	1 462.3
March	845.5	994.9	71.4	6.7	72.7	841.2	991.8	79.2	7.4	73.0	1 466.3
April	844.2	993.2	70.9	6.7	72.4	845.4	991.8	70.9	6.7	72.3	1 470.2
May	842.5	992.0	70.4	6.6	72.1	851.8	999.3	64.7	6.1	72.2	1 474.0
June	842.3	992.9	69.6	6.6	71.9	828.3	986.5	70.1	6.6	71.5	1 477.9
July	844.8	996.3	68.7	6.5	71.9	841.8	991.5	69.7	6.6	71.6	1 481.2
August	849.4	1 001.4	67.7	6.3	72.0	850.8	1 000.1	70.1	6.6	72.1	1 484.6
September	854.6	1 007.2	66.4	6.2	72.1	857.1	1 009.9	64.8	6.0	72.2	1 488.0
October	859.9	1 012.9	65.1	6.0	72.3	861.3	1 015.3	68.3	6.3	72.6	1 492.1
November	864.6	1 018.0	63.7	5.9	72.4	868.6	1 022.3	58.4	5.4	72.2	1 496.2
FEMALES											
November 2000	416.2	749.2	60.7	7.5	56.8	417.4	745.7	61.2	7.6	56.6	1 425.9
November 2001	414.3	763.6	64.0	7.7	56.9	414.5	762.4	62.7	7.6	56.7	1 454.1
2002											
November	427.6	792.0	63.8	7.5	57.5	423.8	786.2	63.3	7.5	57.1	1 487.3
December	429.0	797.0	63.8	7.4	57.7	425.3	791.1	62.8	7.4	57.3	1 490.3
2003											
January	429.7	801.3	64.3	7.4	57.9	440.5	808.1	62.4	7.2	58.2	1 494.9
February	429.8	804.7	64.8	7.4	58.0	429.6	811.6	66.1	7.5	58.5	1 499.4
March	429.3	807.4	64.9	7.4	58.0	426.9	806.1	68.7	7.8	58.2	1 504.0
April	429.2	809.0	64.7	7.4	57.9	423.0	798.9	63.1	7.3	57.2	1 508.1
May	430.4	810.2	63.8	7.3	57.8	436.2	817.4	62.6	7.1	58.2	1 512.3
June	432.9	812.1	62.4	7.1	57.7	430.4	812.7	62.1	7.1	57.7	1 516.4
July	436.6	815.3	60.7	6.9	57.6	433.4	810.7	62.2	7.1	57.4	1 520.1
August	440.1	819.2	59.1	6.7	57.6	438.7	819.1	59.0	6.7	57.6	1 523.9
September	442.9	823.1	57.6	6.5	57.6	455.4	822.6	59.1	6.7	57.7	1 527.7
October	445.1	826.9	56.3	6.4	57.7	438.3	830.1	51.9	5.9	57.6	1 531.8
November	446.2	829.4	55.2	6.2	57.7	445.5	831.3	57.1	6.4	57.8	1 536.0
PERSONS											
November 2000	1 235.7	1 692.1	138.9	7.6	64.8	1 234.7	1 685.7	140.7	7.7	64.7	2 824.1
November 2001	1 230.1	1 719.8	151.1	8.1	65.0	1 227.5	1 715.8	149.6	8.0	64.8	2 876.9
2002											
November	1 261.5	1 781.3	133.7	7.0	65.2	1 255.8	1 776.9	132.3	6.9	65.0	2 939.0
December	1 267.2	1 789.6	134.5	7.0	65.3	1 255.2	1 782.4	134.5	7.0	65.1	2 944.5
2003											
January	1 272.1	1 796.3	135.5	7.0	65.4	1 293.5	1 810.6	132.3	6.8	65.8	2 953.1
February	1 274.8	1 800.5	136.2	7.0	65.4	1 278.4	1 807.7	134.0	6.9	65.6	2 961.7
March	1 274.8	1 802.3	136.3	7.0	65.3	1 268.1	1 797.9	147.9	7.6	65.5	2 970.3
April	1 273.4	1 802.2	135.6	7.0	65.1	1 268.4	1 790.8	134.0	7.0	64.6	2 978.3
May	1 272.8	1 802.3	134.2	6.9	64.8	1 288.0	1 816.7	127.3	6.5	65.1	2 986.3
June	1 275.2	1 805.0	132.0	6.8	64.7	1 258.6	1 799.2	132.2	6.8	64.5	2 994.3
July	1 281.4	1 811.6	129.4	6.7	64.7	1 275.2	1 802.2	131.8	6.8	64.4	3 001.4
August	1 289.4	1 820.7	126.8	6.5	64.7	1 289.5	1 819.3	129.1	6.6	64.8	3 008.5
September	1 297.5	1 830.3	124.1	6.3	64.8	1 312.5	1 832.5	123.9	6.3	64.9	3 015.7
October	1 304.9	1 839.8	121.4	6.2	64.9	1 299.6	1 845.4	120.2	6.1	65.0	3 023.9
November	1 310.8	1 847.4	119.0	6.0	64.9	1 314.1	1 853.6	115.5	5.9	64.9	3 032.2

LABOUR FORCE STATUS (AGED 15 & OVER)—South Australia

	TREND					SEASONALLY ADJUSTED					
	<i>Employed full time</i>	<i>Total employed</i>	<i>Total unemp- loyed</i>	<i>Unemp- loyment rate</i>	<i>Partici- pation rate</i>	<i>Employed full time</i>	<i>Total employed</i>	<i>Total unemp- loyed</i>	<i>Unemp- loyment rate</i>	<i>Partici- pation rate</i>	<i>Civilian population</i>
	'000	'000	'000	%	%	'000	'000	'000	%	%	'000
MALES											
November 2000	326.2	380.0	31.7	7.7	69.6	327.3	380.5	31.8	7.7	69.7	591.3
November 2001	318.8	376.8	32.0	7.8	68.7	319.6	376.8	32.0	7.8	68.7	594.8
2002											
November	329.2	387.0	26.3	6.4	68.9	327.3	385.7	26.6	6.5	68.7	599.8
December	331.2	387.8	26.5	6.4	69.0	332.6	388.8	24.0	5.8	68.8	600.2
2003											
January	333.0	388.5	27.1	6.5	69.2	335.0	389.1	28.3	6.8	69.5	600.9
February	334.7	389.5	27.8	6.7	69.4	337.4	388.5	29.0	7.0	69.4	601.6
March	336.4	391.0	28.4	6.8	69.6	332.1	390.4	27.5	6.6	69.4	602.3
April	337.7	392.8	28.5	6.8	69.9	335.9	391.8	29.0	6.9	69.8	602.7
May	338.5	394.5	28.1	6.7	70.1	338.3	395.2	27.7	6.6	70.1	603.0
June	338.7	395.6	27.3	6.5	70.1	343.3	396.1	29.3	6.9	70.5	603.4
July	338.2	396.0	26.5	6.3	70.0	339.4	398.4	26.0	6.1	70.3	603.8
August	337.1	395.8	25.8	6.1	69.8	335.9	396.4	24.1	5.7	69.6	604.3
September	335.6	395.4	25.4	6.0	69.6	333.5	394.1	24.7	5.9	69.3	604.7
October	334.2	394.8	25.2	6.0	69.4	333.8	392.5	25.7	6.2	69.1	605.5
November	333.0	394.2	25.2	6.0	69.2	333.6	395.5	26.5	6.3	69.6	606.4
FEMALES											
November 2000	157.2	298.1	20.6	6.5	51.7	156.8	296.6	22.5	7.1	51.7	616.6
November 2001	154.9	304.7	20.0	6.2	52.4	159.8	308.3	18.8	5.7	52.8	619.9
2002											
November	156.2	312.0	19.1	5.8	53.0	154.1	311.1	19.0	5.7	52.8	624.8
December	159.4	314.5	18.5	5.6	53.3	157.8	311.9	17.9	5.4	52.8	625.2
2003											
January	162.4	317.4	18.2	5.4	53.6	163.0	318.7	17.6	5.2	53.7	625.8
February	165.0	320.2	18.0	5.3	54.0	167.3	320.1	18.3	5.4	54.0	626.3
March	166.7	322.4	18.1	5.3	54.3	168.1	325.0	18.4	5.4	54.8	626.9
April	167.3	323.7	18.5	5.4	54.6	167.6	321.6	18.4	5.4	54.2	627.1
May	167.1	324.0	18.9	5.5	54.6	165.3	326.0	18.5	5.4	54.9	627.4
June	166.3	323.3	19.4	5.7	54.6	164.2	323.6	19.4	5.6	54.6	627.6
July	165.2	322.1	19.9	5.8	54.5	168.9	320.7	20.2	5.9	54.3	628.1
August	164.0	320.7	20.5	6.0	54.3	161.1	320.4	20.1	5.9	54.2	628.4
September	162.5	319.2	21.0	6.2	54.1	165.9	320.0	22.1	6.4	54.4	628.9
October	161.0	317.9	21.5	6.3	53.9	160.4	319.1	20.3	6.0	53.9	629.7
November	159.6	316.4	21.9	6.5	53.7	156.4	314.0	22.6	6.7	53.4	630.5
PERSONS											
November 2000	483.3	678.1	52.2	7.1	60.5	484.1	677.1	54.3	7.4	60.6	1 207.9
November 2001	473.6	681.4	52.1	7.1	60.4	479.3	685.1	50.8	6.9	60.6	1 214.7
2002											
November	485.4	699.0	45.4	6.1	60.8	481.3	696.8	45.6	6.1	60.6	1 224.6
December	490.5	702.3	45.1	6.0	61.0	490.4	700.7	41.9	5.6	60.6	1 225.4
2003											
January	495.4	705.9	45.3	6.0	61.2	498.0	707.8	45.9	6.1	61.4	1 226.7
February	499.8	709.6	45.8	6.1	61.5	504.7	708.6	47.4	6.3	61.6	1 227.9
March	503.0	713.4	46.5	6.1	61.8	500.2	715.4	46.0	6.0	61.9	1 229.2
April	504.9	716.5	47.0	6.2	62.1	503.6	713.4	47.5	6.2	61.9	1 229.8
May	505.6	718.5	47.0	6.1	62.2	503.6	721.2	46.2	6.0	62.4	1 230.4
June	505.0	718.9	46.7	6.1	62.2	507.5	719.6	48.7	6.3	62.4	1 231.0
July	503.4	718.1	46.4	6.1	62.1	508.3	719.1	46.2	6.0	62.1	1 231.9
August	501.0	716.5	46.3	6.1	61.9	497.1	716.8	44.2	5.8	61.7	1 232.7
September	498.2	714.6	46.4	6.1	61.7	499.4	714.0	46.8	6.1	61.7	1 233.5
October	495.2	712.7	46.7	6.1	61.5	494.2	711.6	46.0	6.1	61.3	1 235.2
November	492.6	710.7	47.1	6.2	61.3	490.0	709.5	49.0	6.5	61.3	1 236.8

LABOUR FORCE STATUS (AGED 15 & OVER)—Western Australia

	TREND					SEASONALLY ADJUSTED					
	<i>Employed full time</i>	<i>Total employed</i>	<i>Total unemp- loyed</i>	<i>Unemp- loyment rate</i>	<i>Partici- pation rate</i>	<i>Employed full time</i>	<i>Total employed</i>	<i>Total unemp- loyed</i>	<i>Unemp- loyment rate</i>	<i>Partici- pation rate</i>	<i>Civilian population</i>
	'000	'000	'000	%	%	'000	'000	'000	%	%	'000
MALES											
November 2000	454.3	524.6	36.6	6.5	75.1	453.7	523.5	36.3	6.5	74.9	747.6
November 2001	458.1	532.6	39.6	6.9	75.3	465.6	536.8	38.3	6.7	75.7	760.0
2002											
November	458.1	543.4	38.4	6.6	75.3	454.9	543.6	39.2	6.7	75.4	772.7
December	461.8	545.2	37.7	6.5	75.3	460.8	543.9	37.7	6.5	75.2	773.6
2003											
January	465.8	547.3	36.8	6.3	75.4	464.6	546.9	38.3	6.5	75.5	774.9
February	469.7	549.7	36.1	6.2	75.5	471.3	549.7	35.5	6.1	75.4	776.1
March	472.6	552.1	35.4	6.0	75.6	475.5	552.4	32.3	5.5	75.2	777.3
April	473.9	554.0	34.8	5.9	75.6	472.1	553.3	37.4	6.3	75.9	778.6
May	473.5	554.9	34.4	5.8	75.6	478.5	556.6	35.7	6.0	76.0	779.8
June	472.5	554.8	34.3	5.8	75.4	474.4	558.6	32.7	5.5	75.7	781.0
July	472.2	554.3	34.4	5.8	75.2	464.9	552.4	33.4	5.7	74.9	782.5
August	473.2	554.2	34.6	5.9	75.1	469.8	551.0	33.5	5.7	74.6	783.9
September	475.4	554.5	34.7	5.9	75.0	477.0	554.2	37.4	6.3	75.3	785.3
October	478.2	555.3	34.7	5.9	75.0	477.9	553.4	35.5	6.0	74.8	787.3
November	480.9	556.2	34.9	5.9	75.0	487.8	561.7	33.2	5.6	75.4	789.3
FEMALES											
November 2000	219.5	412.4	23.9	5.5	58.3	219.7	410.0	26.1	6.0	58.3	748.4
November 2001	206.2	411.2	27.2	6.2	57.6	207.5	416.0	25.8	5.8	58.1	760.5
2002											
November	212.6	425.3	24.8	5.5	58.2	209.9	422.5	21.3	4.8	57.4	773.6
December	213.1	426.6	24.9	5.5	58.3	215.1	427.4	29.3	6.4	59.0	774.6
2003											
January	213.6	427.1	24.5	5.4	58.2	219.2	434.7	24.9	5.4	59.2	775.9
February	214.4	426.7	24.1	5.3	58.0	214.7	427.1	22.6	5.0	57.9	777.2
March	215.3	425.7	24.0	5.3	57.8	205.9	419.0	23.5	5.3	56.8	778.5
April	215.8	424.2	24.3	5.4	57.5	216.6	423.6	24.1	5.4	57.4	779.8
May	216.1	422.4	25.1	5.6	57.3	222.0	424.6	24.0	5.3	57.4	781.0
June	216.3	421.0	26.1	5.8	57.1	219.4	424.8	25.0	5.6	57.5	782.3
July	216.7	420.2	27.2	6.1	57.1	214.2	417.3	31.2	7.0	57.2	783.9
August	217.0	419.9	27.9	6.2	57.0	212.5	421.0	28.3	6.3	57.2	785.4
September	217.6	419.9	28.3	6.3	56.9	216.3	412.5	25.6	5.8	55.7	787.0
October	218.5	420.5	28.7	6.4	56.9	221.8	423.2	29.1	6.4	57.3	789.1
November	219.6	421.5	28.9	6.4	57.0	222.2	426.7	29.2	6.4	57.6	791.2
PERSONS											
November 2000	673.8	937.0	60.5	6.1	66.7	673.4	933.5	62.4	6.3	66.6	1 496.1
November 2001	664.4	943.8	66.8	6.6	66.5	673.1	952.9	64.2	6.3	66.9	1 520.5
2002											
November	670.7	968.7	63.2	6.1	66.7	664.8	966.1	60.5	5.9	66.4	1 546.3
December	674.9	971.8	62.6	6.0	66.8	675.9	971.3	67.0	6.5	67.1	1 548.3
2003											
January	679.5	974.5	61.4	5.9	66.8	683.8	981.7	63.2	6.0	67.4	1 550.8
February	684.1	976.5	60.2	5.8	66.7	685.9	976.8	58.1	5.6	66.6	1 553.3
March	687.9	977.9	59.4	5.7	66.7	681.3	971.4	55.8	5.4	66.0	1 555.8
April	689.8	978.3	59.1	5.7	66.6	688.6	976.9	61.5	5.9	66.6	1 558.3
May	689.6	977.3	59.4	5.7	66.4	700.5	981.2	59.7	5.7	66.7	1 560.8
June	688.8	975.7	60.4	5.8	66.3	693.8	983.4	57.7	5.5	66.6	1 563.4
July	688.9	974.5	61.6	5.9	66.1	679.1	969.7	64.6	6.2	66.0	1 566.3
August	690.2	974.0	62.4	6.0	66.0	682.3	971.9	61.7	6.0	65.9	1 569.3
September	693.0	974.5	63.0	6.1	66.0	693.3	966.6	63.0	6.1	65.5	1 572.3
October	696.7	975.8	63.4	6.1	65.9	699.7	976.7	64.6	6.2	66.1	1 576.4
November	700.4	977.7	63.8	6.1	66.0	710.0	988.4	62.4	5.9	66.5	1 580.5

LABOUR FORCE STATUS (AGED 15 & OVER)—Tasmania

	TREND					SEASONALLY ADJUSTED					
	<i>Employed full time</i>	<i>Total employed</i>	<i>Total unemp- loyed</i>	<i>Unemp- loyment rate</i>	<i>Partici- pation rate</i>	<i>Employed full time</i>	<i>Total employed</i>	<i>Total unemp- loyed</i>	<i>Unemp- loyment rate</i>	<i>Partici- pation rate</i>	<i>Civilian population</i>
	'000	'000	'000	%	%	'000	'000	'000	%	%	'000
MALES											
November 2000	94.5	111.6	12.2	9.8	68.5	94.5	111.6	12.0	9.7	68.4	180.8
November 2001	93.7	109.8	12.2	10.0	67.3	93.7	110.1	12.7	10.3	67.8	181.2
2002											
November	94.6	110.3	11.3	9.3	66.8	95.1	111.6	10.0	8.3	66.9	182.0
December	94.8	110.3	11.7	9.6	67.0	94.8	110.2	12.7	10.3	67.5	182.1
2003											
January	94.8	110.3	12.1	9.9	67.1	96.1	110.5	11.7	9.6	67.1	182.3
February	94.8	110.3	12.2	10.0	67.2	94.0	109.1	13.2	10.8	67.0	182.5
March	94.8	110.5	12.0	9.8	67.1	93.8	110.2	12.6	10.3	67.2	182.7
April	95.0	110.9	11.4	9.3	66.9	95.3	111.8	10.6	8.6	66.9	182.9
May	95.3	111.4	10.7	8.8	66.7	95.9	111.8	10.2	8.4	66.6	183.2
June	95.7	111.9	10.1	8.2	66.5	94.9	110.4	11.5	9.4	66.5	183.4
July	96.1	112.4	9.7	7.9	66.5	96.7	113.3	8.0	6.6	66.1	183.7
August	96.5	112.8	9.5	7.8	66.5	96.8	113.0	9.7	7.9	66.7	183.9
September	96.8	113.1	9.5	7.8	66.5	96.5	112.7	9.3	7.6	66.3	184.2
October	97.1	113.3	9.6	7.8	66.6	96.5	113.8	10.0	8.0	67.0	184.6
November	97.4	113.6	9.7	7.9	66.7	98.3	113.2	10.1	8.2	66.7	185.0
FEMALES											
November 2000	43.4	89.9	7.1	7.4	50.8	44.7	89.9	7.5	7.7	51.0	190.8
November 2001	45.0	89.3	7.2	7.5	50.3	44.9	90.3	6.7	6.9	50.6	191.8
2002											
November	44.5	89.3	7.6	7.9	50.2	43.2	88.0	7.2	7.5	49.3	193.0
December	44.7	89.7	7.6	7.8	50.4	46.2	90.5	8.3	8.4	51.1	193.1
2003											
January	44.7	90.4	7.6	7.8	50.7	44.0	90.8	7.1	7.3	50.7	193.3
February	44.7	91.0	7.6	7.7	50.9	45.6	90.6	8.1	8.3	51.0	193.5
March	44.8	91.5	7.5	7.6	51.1	44.5	91.5	7.4	7.5	51.0	193.8
April	45.1	92.0	7.3	7.4	51.2	43.8	92.6	6.6	6.6	51.1	194.1
May	45.7	92.5	7.1	7.1	51.2	46.2	93.5	7.6	7.5	52.0	194.4
June	46.4	93.0	6.8	6.8	51.3	45.8	91.3	7.1	7.2	50.5	194.6
July	47.2	93.8	6.5	6.5	51.4	48.1	92.8	6.8	6.9	51.1	194.9
August	47.7	94.5	6.2	6.1	51.6	48.0	95.5	5.7	5.7	51.9	195.2
September	48.0	95.1	5.9	5.8	51.7	48.4	95.7	5.6	5.5	51.8	195.5
October	48.1	95.6	5.7	5.6	51.7	48.1	96.7	5.6	5.5	52.2	195.9
November	48.0	96.0	5.5	5.4	51.7	47.0	94.6	5.8	5.8	51.2	196.3
PERSONS											
November 2000	137.9	201.4	19.3	8.7	59.4	139.3	201.5	19.5	8.8	59.5	371.6
November 2001	138.7	199.2	19.4	8.9	58.6	138.6	200.5	19.4	8.8	59.0	373.0
2002											
November	139.1	199.6	18.9	8.7	58.3	138.3	199.6	17.2	7.9	57.8	374.9
December	139.5	200.0	19.3	8.8	58.5	141.0	200.7	20.9	9.4	59.1	375.1
2003											
January	139.5	200.7	19.7	8.9	58.7	140.1	201.3	18.9	8.6	58.6	375.6
February	139.5	201.3	19.8	8.9	58.8	139.6	199.6	21.4	9.7	58.8	376.0
March	139.6	202.0	19.5	8.8	58.8	138.3	201.6	20.0	9.0	58.9	376.5
April	140.1	202.8	18.8	8.5	58.8	139.1	204.4	17.1	7.7	58.8	377.0
May	141.0	203.8	17.8	8.0	58.7	142.1	205.3	17.8	8.0	59.1	377.5
June	142.1	205.0	16.9	7.6	58.7	140.7	201.7	18.6	8.4	58.3	378.0
July	143.3	206.2	16.2	7.3	58.7	144.8	206.1	14.9	6.7	58.4	378.6
August	144.2	207.2	15.7	7.0	58.8	144.8	208.5	15.4	6.9	59.1	379.1
September	144.8	208.2	15.4	6.9	58.9	144.8	208.4	14.9	6.7	58.8	379.7
October	145.2	209.0	15.3	6.8	58.9	144.6	210.5	15.6	6.9	59.4	380.5
November	145.4	209.5	15.2	6.7	59.0	145.2	207.8	15.9	7.1	58.7	381.3

TREND

	<i>Employed full time</i>	<i>Total employed</i>	<i>Total unemployed</i>	<i>Unemployment rate</i>	<i>Participation rate</i>	<i>Civilian population</i>
	'000	'000	'000	%	%	'000
MALES						
November 2000	44.0	51.9	3.6	6.4	75.2	73.8
November 2001	44.1	54.4	4.5	7.7	79.5	74.1
2002						
November	45.0	54.4	3.2	5.6	78.0	73.8
December	45.2	54.6	3.3	5.7	78.6	73.8
2003						
January	45.3	55.0	3.4	5.9	79.2	73.7
February	45.3	55.2	3.6	6.1	79.7	73.7
March	45.3	55.2	3.8	6.4	80.0	73.7
April	45.1	55.0	3.8	6.5	79.7	73.8
May	44.9	54.6	3.8	6.4	79.1	73.9
June	44.6	54.2	3.5	6.1	78.1	74.0
July	44.2	53.9	3.2	5.6	77.2	74.0
August	43.9	53.7	3.0	5.2	76.7	73.9
September	43.6	53.7	2.8	4.9	76.4	73.8
October	43.4	53.6	2.7	4.7	76.3	73.8
November	43.3	53.8	2.6	4.6	76.4	73.8
FEMALES						
November 2000	28.5	41.2	1.6	3.8	63.5	67.4
November 2001	28.2	42.9	3.6	7.8	67.9	68.5
2002						
November	30.1	44.3	2.1	4.4	67.8	68.4
December	29.8	44.4	2.2	4.7	68.1	68.4
2003						
January	29.4	44.2	2.5	5.3	68.3	68.3
February	28.9	43.7	2.8	6.0	68.1	68.3
March	28.5	43.0	3.0	6.6	67.5	68.2
April	28.2	42.2	3.2	7.0	66.5	68.2
May	28.1	41.3	3.2	7.2	65.3	68.3
June	28.0	40.7	3.2	7.3	64.3	68.3
July	27.9	40.3	3.1	7.1	63.6	68.3
August	27.8	40.3	3.0	6.8	63.3	68.3
September	27.6	40.4	2.8	6.5	63.2	68.3
October	27.4	40.7	2.6	6.1	63.4	68.4
November	27.4	41.1	2.5	5.7	63.8	68.4
PERSONS						
November 2000	72.5	93.1	5.2	5.3	69.6	141.1
November 2001	72.3	97.3	8.2	7.8	74.0	142.6
2002						
November	75.1	98.7	5.3	5.1	73.1	142.2
December	75.0	99.0	5.5	5.3	73.5	142.1
2003						
January	74.7	99.1	5.9	5.6	73.9	142.0
February	74.2	98.9	6.4	6.0	74.1	142.0
March	73.8	98.3	6.8	6.5	74.0	141.9
April	73.3	97.2	7.0	6.7	73.4	142.0
May	73.0	96.0	7.0	6.8	72.5	142.2
June	72.7	94.9	6.7	6.6	71.5	142.3
July	72.2	94.2	6.3	6.3	70.7	142.2
August	71.7	94.0	5.9	5.9	70.2	142.2
September	71.2	94.1	5.6	5.6	70.1	142.1
October	70.8	94.3	5.3	5.3	70.1	142.2
November	70.7	94.9	5.1	5.1	70.3	142.2

TREND

	<i>Employed full time</i>	<i>Total employed</i>	<i>Total unemployed</i>	<i>Unemployment rate</i>	<i>Participation rate</i>	<i>Civilian population</i>
	'000	'000	'000	%	%	'000
MALES						
November 2000	75.6	89.1	4.8	5.1	78.9	118.9
November 2001	73.1	87.9	4.8	5.2	77.2	120.1
2002						
November	78.4	91.1	4.6	4.9	78.7	121.7
December	78.2	91.0	4.8	5.0	78.6	121.9
2003						
January	77.6	90.8	4.8	5.0	78.4	122.0
February	76.7	90.6	4.7	5.0	78.1	122.0
March	75.7	90.4	4.6	4.9	77.8	122.0
April	74.8	90.2	4.4	4.7	77.5	122.1
May	74.1	90.0	4.2	4.5	77.1	122.2
June	73.9	90.0	4.0	4.3	76.9	122.3
July	74.0	90.0	3.9	4.2	76.7	122.5
August	74.2	90.2	3.9	4.1	76.7	122.6
September	74.5	90.4	3.8	4.0	76.7	122.7
October	74.9	90.7	3.7	3.9	76.8	123.0
November	75.2	91.1	3.6	3.8	77.0	123.2
FEMALES						
November 2000	50.7	81.5	3.1	3.7	68.0	124.3
November 2001	50.9	79.5	2.9	3.5	65.7	125.5
2002						
November	54.2	83.5	2.8	3.3	67.9	127.1
December	53.9	83.4	2.7	3.2	67.7	127.3
2003						
January	53.0	83.1	2.8	3.2	67.5	127.4
February	52.0	82.7	2.9	3.4	67.2	127.4
March	51.0	82.2	3.0	3.6	66.8	127.5
April	50.4	81.6	3.2	3.8	66.5	127.6
May	50.3	81.1	3.4	4.0	66.2	127.7
June	50.6	80.9	3.5	4.2	66.0	127.9
July	51.1	81.0	3.6	4.3	66.0	128.1
August	51.3	81.2	3.6	4.3	66.1	128.3
September	51.4	81.6	3.6	4.2	66.3	128.5
October	51.4	82.1	3.5	4.0	66.5	128.7
November	51.3	82.5	3.3	3.9	66.7	128.8
PERSONS						
November 2000	126.3	170.5	7.9	4.4	73.3	243.3
November 2001	123.9	167.5	7.7	4.4	71.3	245.6
2002						
November	132.6	174.6	7.5	4.1	73.2	248.8
December	132.1	174.4	7.5	4.1	73.0	249.2
2003						
January	130.6	174.0	7.5	4.2	72.8	249.3
February	128.7	173.3	7.6	4.2	72.5	249.4
March	126.7	172.6	7.7	4.3	72.2	249.5
April	125.2	171.8	7.7	4.3	71.8	249.8
May	124.4	171.1	7.7	4.3	71.5	250.0
June	124.5	170.9	7.6	4.3	71.3	250.2
July	125.0	171.0	7.5	4.2	71.3	250.6
August	125.6	171.4	7.5	4.2	71.3	250.9
September	126.0	172.0	7.3	4.1	71.4	251.2
October	126.3	172.8	7.2	4.0	71.5	251.6
November	126.6	173.7	6.9	3.8	71.7	252.0

	EMPLOYED			UNEMPLOYED			UNEMPLOYMENT RATE				
	Full time	Part time	Total	Looking for f/t work	Total	Labour force	Not in labour force	Civilian population aged 15 and over	Looking for f/t work	Total	Participation rate
	'000	'000	'000	'000	'000	'000	'000	'000	%	%	%
MALES											
New South Wales	1 538.4	240.0	1 778.4	75.4	91.7	1 870.1	773.7	2 643.8	4.7	4.9	70.7
Victoria	1 136.7	211.6	1 348.3	53.6	63.1	1 411.4	570.9	1 982.3	4.5	4.5	71.2
Queensland	869.3	149.8	1 019.1	44.9	54.2	1 073.3	423.0	1 496.2	4.9	5.0	71.7
South Australia	333.4	60.6	394.0	22.5	26.5	420.5	185.8	606.4	6.3	6.3	69.4
Western Australia	484.3	75.3	559.5	24.8	31.3	590.8	198.5	789.3	4.9	5.3	74.9
Tasmania	98.9	14.7	113.6	8.8	9.7	123.3	61.7	185.0	8.2	7.9	66.6
Northern Territory	43.0	10.8	53.8	2.2	2.6	56.5	17.3	73.8	4.9	4.7	76.5
Australian Capital Territory	74.6	17.3	91.9	2.4	3.2	95.1	28.1	123.2	3.1	3.4	77.2
Australia	4 578.5	780.1	5 358.7	234.6	282.3	5 641.0	2 259.0	7 900.0	4.9	5.0	71.4
FEMALES											
New South Wales	792.0	610.7	1 402.7	54.6	83.7	1 486.4	1 229.3	2 715.7	6.5	5.6	54.7
Victoria	581.1	486.9	1 067.9	36.8	59.4	1 127.3	924.3	2 051.7	6.0	5.3	54.9
Queensland	444.8	389.6	834.4	36.0	53.5	887.8	648.2	1 536.0	7.5	6.0	57.8
South Australia	156.4	160.7	317.0	12.7	20.2	337.2	293.3	630.5	7.5	6.0	53.5
Western Australia	223.1	202.8	426.0	19.7	27.1	453.1	338.1	791.2	8.1	6.0	57.3
Tasmania	47.4	47.9	95.3	4.3	5.7	101.0	95.2	196.3	8.3	5.6	51.5
Northern Territory	27.7	15.2	42.9	1.1	1.5	44.4	24.0	68.4	3.8	3.3	64.9
Australian Capital Territory	51.7	30.8	82.4	1.6	2.8	85.2	43.6	128.8	3.0	3.3	66.1
Australia	2 324.2	1 944.5	4 268.7	166.8	253.7	4 522.4	3 596.2	8 118.6	6.7	5.6	55.7
PERSONS											
New South Wales	2 330.4	850.7	3 181.1	130.0	175.4	3 356.5	2 003.0	5 359.5	5.3	5.2	62.6
Victoria	1 717.8	698.5	2 416.3	90.3	122.5	2 538.8	1 495.2	4 034.0	5.0	4.8	62.9
Queensland	1 314.1	539.4	1 853.5	80.9	107.6	1 961.1	1 071.2	3 032.2	5.8	5.5	64.7
South Australia	489.8	221.3	711.1	35.2	46.7	757.7	479.1	1 236.8	6.7	6.2	61.3
Western Australia	707.4	278.1	985.5	44.5	58.4	1 043.9	536.6	1 580.5	5.9	5.6	66.0
Tasmania	146.3	62.6	208.9	13.1	15.4	224.3	157.0	381.3	8.2	6.9	58.8
Northern Territory	70.8	26.0	96.8	3.3	4.1	100.9	41.4	142.2	4.5	4.0	70.9
Australian Capital Territory	126.2	48.1	174.3	4.0	6.0	180.3	71.7	252.0	3.1	3.3	71.5
Australia	6 902.7	2 724.7	9 627.4	401.4	536.1	10 163.5	5 855.1	16 018.6	5.5	5.3	63.4

PERSONS AGED 15 TO 19, Labour Force Status: **Trend**

	EMPLOYED		UNEMPLOYED		UNEMPLOYMENT RATE		Participation rate	Employment to population ratio	Unemployment to population ratio — looking for full-time work
	Full time	Total	Looking for f/t work	Total	Looking for f/t work	Total			
	'000	'000	'000	'000	%	%			
MALES									
November 2000	144.3	337.1	39.0	71.3	21.3	17.5	59.0	48.7	5.6
November 2001	143.6	339.4	44.4	78.7	23.6	18.8	60.0	48.7	6.4
2002									
November	142.7	341.5	36.6	71.2	20.4	17.3	59.0	48.8	5.2
December	144.5	341.1	37.5	71.3	20.6	17.3	58.9	48.7	5.4
2003									
January	146.4	340.6	38.2	71.3	20.7	17.3	58.8	48.6	5.4
February	147.6	339.4	38.4	71.2	20.6	17.3	58.5	48.4	5.5
March	147.6	337.4	38.0	71.0	20.5	17.4	58.2	48.1	5.4
April	146.4	335.0	37.3	70.7	20.3	17.4	57.8	47.7	5.3
May	144.4	332.8	36.7	70.4	20.3	17.5	57.4	47.4	5.2
June	142.9	332.0	36.4	70.1	20.3	17.4	57.3	47.3	5.2
July	142.9	333.1	36.3	69.6	20.2	17.3	57.3	47.4	5.2
August	144.3	336.0	36.2	68.8	20.0	17.0	57.6	47.8	5.1
September	146.7	340.1	36.0	67.8	19.7	16.6	58.0	48.4	5.1
October	149.4	344.4	35.6	66.6	19.2	16.2	58.4	48.9	5.1
November	152.1	348.4	34.9	65.3	18.7	15.8	58.7	49.4	5.0
FEMALES									
November 2000	90.5	338.5	24.8	57.7	21.5	14.5	59.9	51.2	3.8
November 2001	84.5	332.7	30.4	67.3	26.5	16.8	60.1	49.9	4.6
2002									
November	80.2	345.5	26.6	63.3	24.9	15.5	61.0	51.5	4.0
December	80.8	348.0	27.3	62.4	25.3	15.2	61.2	51.9	4.1
2003									
January	81.2	349.9	28.1	61.4	25.7	14.9	61.3	52.1	4.2
February	81.7	351.3	28.6	60.2	25.9	14.6	61.3	52.3	4.3
March	82.5	352.1	28.5	59.1	25.7	14.4	61.2	52.4	4.2
April	83.5	351.9	28.0	58.2	25.1	14.2	61.0	52.3	4.2
May	84.5	350.7	27.1	57.6	24.3	14.1	60.7	52.1	4.0
June	85.1	349.1	26.3	57.2	23.6	14.1	60.4	51.9	3.9
July	85.2	347.9	25.8	57.5	23.2	14.2	60.2	51.7	3.8
August	84.8	347.4	25.7	58.2	23.3	14.3	60.2	51.6	3.8
September	84.2	347.6	25.8	58.9	23.4	14.5	60.3	51.6	3.8
October	83.6	348.3	25.9	59.7	23.6	14.6	60.5	51.6	3.8
November	82.7	349.4	26.0	60.4	23.9	14.7	60.7	51.7	3.9
PERSONS									
November 2000	234.9	675.6	63.8	129.0	21.4	16.0	59.4	49.9	4.7
November 2001	228.1	672.0	74.8	146.0	24.7	17.8	60.0	49.3	5.5
2002									
November	222.9	686.9	63.2	134.5	22.1	16.4	60.0	50.1	4.6
December	225.3	689.1	64.8	133.7	22.3	16.2	60.0	50.2	4.7
2003									
January	227.6	690.5	66.3	132.7	22.6	16.1	60.0	50.3	4.8
February	229.4	690.6	66.9	131.3	22.6	16.0	59.9	50.3	4.9
March	230.1	689.4	66.5	130.1	22.4	15.9	59.7	50.2	4.8
April	229.8	686.8	65.2	128.9	22.1	15.8	59.4	50.0	4.7
May	228.8	683.5	63.8	128.0	21.8	15.8	59.0	49.7	4.6
June	228.0	681.1	62.6	127.3	21.5	15.7	58.8	49.5	4.6
July	228.1	681.0	62.1	127.1	21.4	15.7	58.8	49.5	4.5
August	229.1	683.4	61.9	127.0	21.3	15.7	58.9	49.7	4.5
September	230.9	687.7	61.7	126.7	21.1	15.6	59.1	50.0	4.5
October	233.0	692.7	61.4	126.3	20.9	15.4	59.4	50.3	4.5
November	234.8	697.8	60.9	125.8	20.6	15.3	59.7	50.5	4.4

PERSONS AGED 15 TO 19, Labour Force Status: **Seasonally Adjusted**

	EMPLOYED		UNEMPLOYED		UNEMPLOYMENT RATE		Participation rate	Employment to population ratio	Unemployment to population ratio — looking for full-time work
	Full time	Total	Looking for f/t work	Total	Looking for f/t work	Total			
'000	'000	'000	'000	%	%	%	%	%	
MALES									
November 2000	148.6	334.8	42.7	76.6	22.3	18.6	59.4	48.3	6.2
November 2001	138.6	342.6	44.5	78.6	24.3	18.7	60.4	49.1	6.4
2002									
November	140.2	342.4	36.3	71.7	20.6	17.3	59.2	48.9	5.2
December	144.7	341.3	37.5	70.5	20.6	17.1	58.8	48.7	5.4
2003									
January	146.7	339.1	39.5	72.3	21.2	17.6	58.7	48.4	5.6
February	148.9	340.0	36.1	69.5	19.5	17.0	58.4	48.5	5.2
March	149.2	337.5	41.3	71.5	21.7	17.5	58.3	48.1	5.9
April	146.2	334.6	35.9	71.1	19.7	17.5	57.8	47.7	5.1
May	147.8	340.3	37.8	70.8	20.4	17.2	58.6	48.5	5.4
June	139.7	327.0	34.8	70.6	19.9	17.8	56.6	46.6	5.0
July	139.8	323.3	33.7	67.6	19.4	17.3	55.7	46.0	4.8
August	142.4	340.9	37.1	68.0	20.7	16.6	58.2	48.5	5.3
September	145.2	337.4	39.5	71.1	21.4	17.4	58.1	48.0	5.6
October	154.2	348.3	36.9	69.1	19.3	16.6	59.3	49.5	5.2
November	154.7	353.0	30.6	60.0	16.5	14.5	58.6	50.0	4.3
FEMALES									
November 2000	89.7	336.1	24.3	55.4	21.3	14.1	59.2	50.8	3.7
November 2001	86.0	335.2	30.4	65.8	26.2	16.4	60.2	50.3	4.6
2002									
November	80.6	346.5	27.5	61.9	25.4	15.2	60.9	51.7	4.1
December	81.8	347.5	22.8	58.3	21.8	14.4	60.5	51.8	3.4
2003									
January	80.8	349.6	29.7	62.1	26.9	15.1	61.3	52.1	4.4
February	81.1	350.9	29.5	61.8	26.7	15.0	61.4	52.2	4.4
March	85.2	353.9	31.2	59.8	26.8	14.5	61.6	52.7	4.6
April	78.7	352.3	27.6	58.4	26.0	14.2	61.1	52.4	4.1
May	85.6	349.8	24.8	56.7	22.5	13.9	60.4	52.0	3.7
June	85.3	349.4	27.9	56.7	24.7	14.0	60.4	51.9	4.1
July	89.4	351.3	21.5	53.5	19.4	13.2	60.2	52.2	3.2
August	83.1	342.1	28.9	64.3	25.8	15.8	60.4	50.8	4.3
September	85.2	343.7	27.1	56.5	24.1	14.1	59.5	51.1	4.0
October	79.2	351.6	23.5	58.7	22.9	14.3	60.8	52.1	3.5
November	84.9	352.9	26.8	61.9	24.0	14.9	61.4	52.2	4.0
PERSONS									
November 2000	238.3	670.9	67.0	131.9	22.0	16.4	59.3	49.6	5.0
November 2001	224.6	677.9	75.0	144.4	25.0	17.6	60.3	49.7	5.5
2002									
November	220.8	688.9	63.8	133.6	22.4	16.2	60.0	50.3	4.7
December	226.5	688.7	60.3	128.9	21.0	15.8	59.6	50.2	4.4
2003									
January	227.5	688.7	69.2	134.4	23.3	16.3	60.0	50.2	5.0
February	230.1	690.9	65.7	131.3	22.2	16.0	59.9	50.3	4.8
March	234.4	691.4	72.5	131.3	23.6	16.0	59.9	50.3	5.3
April	224.9	686.9	63.5	129.4	22.0	15.9	59.4	50.0	4.6
May	233.4	690.1	62.6	127.4	21.2	15.6	59.5	50.2	4.6
June	224.9	676.3	62.7	127.3	21.8	15.8	58.5	49.2	4.6
July	229.2	674.6	55.2	121.1	19.4	15.2	57.9	49.1	4.0
August	225.5	683.0	66.0	132.3	22.6	16.2	59.3	49.7	4.8
September	230.5	681.1	66.6	127.6	22.4	15.8	58.8	49.5	4.8
October	233.4	699.9	60.3	127.8	20.5	15.4	60.0	50.8	4.4
November	239.6	705.9	57.3	121.9	19.3	14.7	59.9	51.1	4.2

	EMPLOYED			UNEMPLOYED			UNEMPLOYMENT					
	Full time	Part time	Total	Looking for f/t work	Total	Labour force	Not in labour force	Civilian population aged 15–19	Looking for f/t work	Total	Participation rate	Unemployment to population ratio — looking for full-time work
	'000	'000	'000	'000	'000	'000	'000	'000	%	%	%	%
NOT ATTENDING FULL-TIME EDUCATION												
Males												
November 2000	137.3	37.2	174.5	36.5	38.6	213.2	29.3	242.4	21.0	18.1	87.9	15.0
November 2001	125.5	53.3	178.8	35.9	42.1	220.9	31.6	252.5	22.2	19.1	87.5	14.2
November 2002	126.3	44.8	171.1	29.0	34.4	205.6	39.5	245.1	18.7	16.8	83.9	11.8
November 2003	139.7	38.1	177.7	24.7	27.2	204.9	30.1	235.0	15.0	13.3	87.2	10.5
Females												
November 2000	83.8	47.9	131.7	18.4	20.9	152.6	34.9	187.5	18.0	13.7	81.4	9.8
November 2001	80.1	59.7	139.8	20.4	25.6	165.4	40.9	206.3	20.3	15.5	80.2	9.9
November 2002	76.5	61.8	138.3	19.4	21.2	159.5	38.2	197.7	20.2	13.3	80.7	9.8
November 2003	79.4	63.8	143.2	19.3	22.6	165.8	33.0	198.8	19.5	13.6	83.4	9.7
Persons												
November 2000	221.1	85.1	306.2	54.8	59.5	365.7	64.2	429.9	19.9	16.3	85.1	12.8
November 2001	205.5	113.0	318.6	56.3	67.7	386.3	72.5	458.8	21.5	17.5	84.2	12.3
November 2002	202.8	106.7	309.5	48.4	55.6	365.1	77.8	442.8	19.3	15.2	82.4	10.9
November 2003	219.1	101.8	320.9	44.0	49.8	370.7	63.1	433.8	16.7	13.4	85.4	10.1
ATTENDING FULL-TIME EDUCATION												
Males												
November 2000	*2.5	148.5	151.0	*4.0	32.3	183.3	266.8	450.1	*61.3	17.6	40.7	*0.9
November 2001	*4.3	150.3	154.7	6.5	30.7	185.4	259.4	444.8	60.0	16.6	41.7	1.5
November 2002	4.7	157.6	162.2	5.6	32.0	194.3	260.5	454.7	54.8	16.5	42.7	1.2
November 2003	4.6	161.4	166.1	4.5	28.4	194.5	275.9	470.3	49.2	14.6	41.4	1.0
Females												
November 2000	*3.1	197.3	200.4	4.7	29.1	229.4	244.2	473.7	60.1	12.7	48.4	1.0
November 2001	*3.6	187.8	191.5	8.2	33.1	224.6	235.2	459.8	69.2	14.7	48.8	1.8
November 2002	*2.1	201.9	204.1	6.3	33.6	237.6	234.8	472.5	74.6	14.1	50.3	1.3
November 2003	*3.6	201.9	205.5	5.7	31.9	237.4	239.5	476.8	61.3	13.4	49.8	1.2
Persons												
November 2000	5.6	345.8	351.4	8.6	61.4	412.8	511.0	923.8	60.6	14.9	44.7	0.9
November 2001	8.0	338.2	346.1	14.7	63.8	410.0	494.6	904.6	64.8	15.6	45.3	1.6
November 2002	6.8	359.5	366.3	12.0	65.6	431.9	495.3	927.2	63.7	15.2	46.6	1.3
November 2003	8.2	363.3	371.5	10.1	60.4	431.9	515.3	947.2	55.3	14.0	45.6	1.1
TOTAL												
Males												
November 2000	139.8	185.7	325.5	40.4	70.9	396.5	296.0	692.5	22.4	17.9	57.3	5.8
November 2001	129.8	203.7	333.4	42.3	72.8	406.3	291.0	697.3	24.6	17.9	58.3	6.1
November 2002	131.0	202.4	333.4	34.6	66.5	399.8	300.0	699.8	20.9	16.6	57.1	4.9
November 2003	144.3	199.5	343.8	29.2	55.6	399.4	306.0	705.3	16.8	13.9	56.6	4.1
Females												
November 2000	86.9	245.1	332.0	23.0	50.0	382.0	279.2	661.2	21.0	13.1	57.8	3.5
November 2001	83.7	247.5	331.3	28.6	58.7	390.0	276.1	666.1	25.5	15.0	58.5	4.3
November 2002	78.6	263.8	342.4	25.7	54.8	397.1	273.1	670.2	24.6	13.8	59.3	3.8
November 2003	83.0	265.7	348.6	24.9	54.5	403.2	272.5	675.6	23.1	13.5	59.7	3.7
Persons												
November 2000	226.7	430.9	657.6	63.5	120.9	778.5	575.2	1 353.7	21.9	15.5	57.5	4.7
November 2001	213.5	451.2	664.7	70.9	131.5	796.2	567.1	1 363.4	24.9	16.5	58.4	5.2
November 2002	209.6	466.2	675.8	60.3	121.2	797.0	573.1	1 370.0	22.3	15.2	58.2	4.4
November 2003	227.3	465.1	692.4	54.1	110.1	802.5	578.4	1 381.0	19.2	13.7	58.1	3.9

* estimate is subject to sampling variability too high for most practical purposes

	EMPLOYED			UNEMPLOYED					UNEMPLOYMENT RATE			
	Full time	Part time	Total	Looking for f/t work	Total	Labour force	Not in labour force	Civilian population aged 15–19	Looking for f/t work	Total	Participation rate	Unemployment to population ratio — looking for full-time work
	'000	'000	'000	'000	'000	'000	'000	'000	%	%	%	%
NOT ATTENDING FULL-TIME EDUCATION												
New South Wales	67.6	36.4	104.0	14.1	16.4	120.4	25.7	146.1	17.2	13.6	82.4	9.6
Victoria	37.1	19.9	57.0	8.6	9.9	66.9	8.7	75.5	18.8	14.8	88.5	11.4
Queensland	56.4	19.3	75.7	8.4	8.9	84.6	10.9	95.5	13.0	10.5	88.6	8.8
South Australia	17.4	7.1	24.5	4.3	5.1	29.6	4.0	33.5	19.8	17.1	88.1	12.8
Western Australia	28.2	14.6	42.8	6.0	6.6	49.4	9.6	59.0	17.5	13.4	83.7	10.2
Tasmania	7.3	1.7	9.0	1.4	1.5	10.5	1.3	11.7	16.0	14.2	89.1	11.8
Northern Territory	2.8	1.4	4.2	*0.3	*0.3	4.5	2.6	7.1	*10.9	*7.6	63.3	*4.8
Australian Capital Territory	2.3	1.5	3.8	*0.9	1.1	5.0	*0.3	5.3	*27.7	22.6	94.0	*16.8
Australia	219.1	101.8	320.9	44.0	49.8	370.7	63.1	433.8	16.7	13.4	85.4	10.1
ATTENDING FULL-TIME EDUCATION												
New South Wales	*2.2	104.1	106.3	*4.5	20.2	126.5	179.4	305.8	*66.9	15.9	41.4	*1.5
Victoria	*0.9	99.9	100.8	*1.5	13.3	114.1	148.6	262.7	*61.6	11.7	43.4	*0.6
Queensland	*2.8	83.0	85.8	*1.2	12.9	98.7	76.3	175.0	*29.9	13.1	56.4	*0.7
South Australia	*0.6	26.5	27.1	*0.7	4.4	31.5	38.4	69.9	*54.6	13.9	45.1	*1.0
Western Australia	*1.0	31.3	32.2	*2.0	7.4	39.7	46.2	85.8	*67.4	18.7	46.2	*2.3
Tasmania	*0.3	7.8	8.1	*0.3	1.2	9.4	13.0	22.3	*49.6	13.1	41.9	*1.5
Northern Territory	*0.1	1.6	1.7	—	*0.1	1.9	5.6	7.4	—	*8.0	25.1	—
Australian Capital Territory	*0.3	9.1	9.4	—	*0.8	10.3	7.9	18.2	—	*8.0	56.4	—
Australia	8.2	363.3	371.5	10.1	60.4	431.9	515.3	947.2	55.3	14.0	45.6	1.1
TOTAL												
New South Wales	69.8	140.5	210.3	18.6	36.6	246.8	205.1	451.9	21.0	14.8	54.6	4.1
Victoria	38.0	119.8	157.8	10.1	23.2	181.0	157.3	338.2	21.0	12.8	53.5	3.0
Queensland	59.2	102.3	161.4	9.6	21.8	183.2	87.3	270.5	13.9	11.9	67.7	3.5
South Australia	18.0	33.6	51.6	5.0	9.4	61.1	42.4	103.5	21.8	15.5	59.0	4.8
Western Australia	29.1	45.9	75.0	8.0	14.0	89.0	55.8	144.8	21.5	15.8	61.5	5.5
Tasmania	7.6	9.5	17.1	1.7	2.7	19.8	14.3	34.1	18.4	13.7	58.2	5.0
Northern Territory	2.9	3.0	5.9	*0.3	*0.5	6.4	8.2	14.6	*10.4	*7.7	43.8	*2.4
Australian Capital Territory	2.6	10.7	13.3	*0.9	1.9	15.2	8.3	23.5	*25.3	12.8	64.8	*3.8
Australia	227.3	465.1	692.4	54.1	110.1	802.5	578.4	1 381.0	19.2	13.7	58.1	3.9

* estimate is subject to sampling variability too high for most practical purposes

— nil or rounded to zero (including null cells)

WHAT IF...? REVISIONS TO TREND ESTIMATES

EFFECT OF NEW SEASONALLY ADJUSTED ESTIMATES ON TREND ESTIMATES

TREND REVISIONS

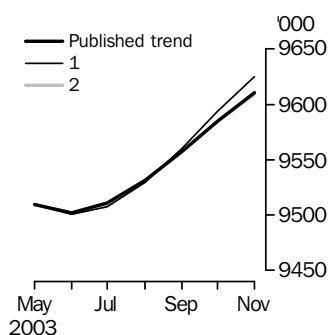
Each time new seasonally adjusted estimates become available, trend estimates are revised (see paragraphs 19 and 20 of Explanatory Notes).

The examples in the tables below show two illustrative scenarios and the consequent revisions to previous trend estimates of employment and the unemployment rate.

- (1) The December seasonally adjusted estimate is *higher* than the November estimate by:
0.30% for employment
1.90% for the unemployment rate
- (2) The December seasonally adjusted estimate is *lower* than the November estimate by:
0.30% for employment
1.90% for the unemployment rate

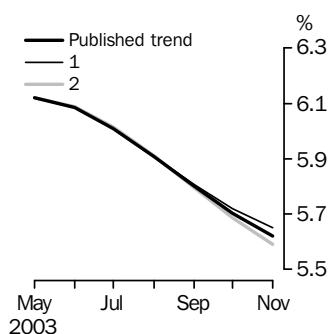
The percentage changes of 0.30% and 1.90% were chosen because they represent the average absolute monthly percentage changes in employment and the unemployment rate respectively.

EMPLOYMENT



		WHAT IF NEXT MONTH'S SEASONALLY ADJUSTED ESTIMATE IS:	
		(1) 9666.4 i.e. rises by 0.30%	(2) 9608.6 i.e. falls by 0.30%
2003			
August	9 531.1	9 529.8	9 530.7
September	9 557.1	9 560.1	9 557.5
October	9 584.9	9 593.5	9 584.9
November	9 610.5	9 625.4	9 609.2

UNEMPLOYMENT RATE



		WHAT IF NEXT MONTH'S SEASONALLY ADJUSTED ESTIMATE IS:	
		(1) 5.7 i.e. rises by 1.90%	(2) 5.5 i.e. falls by 1.90%
2003			
August	5.9	5.9	5.9
September	5.8	5.8	5.8
October	5.7	5.7	5.7
November	5.6	5.7	5.6

EXPLANATORY NOTES

INTRODUCTION

1 This publication contains estimates of the civilian labour force derived from the Labour Force Survey component of the Monthly Population Survey. More detailed estimates are released one week after this publication in various electronic formats - see *Labour Force, Australia, Detailed - Electronic Delivery* (cat. no. 6291.0.55.001).

CONCEPTS, SOURCES AND METHODS

2 The conceptual framework used in Australia's Labour Force Survey aligns closely with the standards and guidelines set out in Resolutions of the International Conference of Labour Statisticians. Descriptions of the underlying concepts and structure of Australia's labour force statistics, and the sources and methods used in compiling the estimates, are presented in *Labour Statistics: Concepts, Sources and Methods* (cat. no. 6102.0) which is also available on the ABS web site <<http://www.abs.gov.au>> (About Statistics—Concepts and Classifications).

MONTHLY POPULATION SURVEY

3 The population survey is based on a multi-stage area sample of private dwellings (currently about 30,000 houses, flats, etc.) and a list sample of non-private dwellings (hotels, motels, etc.), and covers about 0.45% of the population of Australia. The information is obtained from the occupants of selected dwellings by specially trained interviewers. The information obtained relates to the week before the interview (i.e. the reference week).

4 Households selected for the Labour Force Survey are interviewed each month for 8 months, with one eighth of the sample being replaced each month. The first interview is conducted face-to-face. Subsequent interviews are conducted by telephone (if acceptable to the respondent).

5 The interviews are generally conducted during the two weeks beginning on the Monday between the 6th and 12th of each month. Each year, to deal with operational difficulties involved with collecting and processing the Labour Force Survey around the Christmas and New Year holiday period, interviews for December start four weeks after November interviews start, and January interviews start five weeks after December interviews start. As a result, January interviewing may commence as early as the 8th or as late as the 14th, depending on the year. Occasionally, circumstances that present significant operational difficulties for survey collection can result in a change to the normal pattern for the start of interviewing.

6 Estimates from the Labour Force Survey are published first in this publication 31 days after the commencement of interviews for that month, with the exception of estimates for each December which are published 38 days after the commencement of interviews.

SCOPE OF SURVEY

7 The Labour Force Survey includes all persons aged 15 and over except members of the permanent defence forces, certain diplomatic personnel of overseas governments customarily excluded from census and estimated population counts, overseas residents in Australia, and members of non-Australian defence forces (and their dependants) stationed in Australia.

COVERAGE

8 In the Labour Force Survey, coverage rules are applied which aim to ensure that each person is associated with only one dwelling, and hence has only one chance of selection. The coverage rules are necessarily a balance between theoretical and operational considerations. Nevertheless, the chance of a person being enumerated at two separate dwellings in the survey is considered to be negligible.

EXPLANATORY NOTES *continued*

POPULATION BENCHMARKS

9 Labour Force Survey estimates are calculated in such a way as to add up to independent estimates of the civilian population aged 15 and over (population benchmarks). From February 1999, labour force estimates have been compiled using benchmarks based on the results of the 1996 Census of Population and Housing. Small revisions were made to many of the historical estimates from January 1995 to January 1999. The ABS expects to introduce new benchmarks, based on the 2001 Census, in February 2004.

COMPARABILITY OF SERIES

10 From April 1986, the definition of employed persons was changed to include persons who worked without pay between 1 and 14 hours per week in a family business or on a farm (i.e. contributing family workers). For further information, see paragraphs 36 and 37 of the Explanatory Notes to the February 1987 issue of *Labour Force, Australia* (cat. no. 6203.0).

11 The ABS introduced telephone interviewing into the Labour Force Survey in August 1996. Implementation was phased in for each new sample group from August 1996 to February 1997. During the period of implementation, the new method produced different estimates than would have been obtained under the old methodology. The effect dissipated over the final months of implementation and was no longer discernible from February 1997. The estimates for February 1997 and onwards are directly comparable to estimates for periods prior to August 1996. For further details, see the feature article in the June 1997 issue of *Labour Force, Australia* (cat. no. 6203.0).

12 From April 2001 the Labour Force Survey has been conducted using a redesigned questionnaire containing additional data items and some minor definitional changes. Core labour force series were revised for the period April 1986 to March 2001 to ensure continuity. For further details, see *Information Paper: Implementing the Redesigned Labour Force Survey Questionnaire* (cat. no. 6295.0) and *Information Paper: Questionnaires Used in the Labour Force Survey* (cat. no. 6232.0).

SURVEY SAMPLE REDESIGN

13 The Labour Force Survey sample was last reselected using information collected in the 2001 Census of Population and Housing.

14 The bulk of the new sample was phased in over the period November 2002 to June 2003, with one eighth of this portion of the sample being introduced every month. The remainder of the sample (about 18% of the total), which covers less settled areas of Australia and non-private dwellings was rotated in full for New South Wales, Victoria, Tasmania, Northern Territory and Australian Capital Territory in November 2002, and for Queensland, South Australia and Western Australia in December 2002. Such a pattern of implementation means that any changes to labour force estimates due to differences between the two samples, or any other influences, were spread over the eight months.

15 For further details, see *Information Paper: Labour Force Survey Sample Design* (cat. no. 6269.0) and *Technical Report: New Labour Force Survey sample selections: analysis of the effect on estimates* in the October 2003 issue of *Australia Labour Market Statistics* (cat. no. 6105.0).

EXPLANATORY NOTES *continued*

RELIABILITY OF ESTIMATES

16 Two types of error are possible in an estimate based on a sample survey: sampling error and non-sampling error.

Sampling error occurs because a sample, rather than the entire population, is surveyed. One measure of the likely difference resulting from not including all dwellings in the survey is given by the standard error. There are about two chances in three that a sample estimate will differ by less than one standard error from the figure that would have been obtained if all dwellings had been included in the survey, and about nineteen chances in twenty that the difference will be less than two standard errors. Standard errors of estimates for the latest month and of estimates of movements since the previous month are shown on pages 27 and 28. Standard errors of other estimates and other movements may be determined by using information in the Technical Notes in *Labour Force, Australia* (cat. no. 6203.0).

Non sampling error arises from inaccuracies in collecting, recording and processing the data. Every effort is made to minimise reporting error by the careful design of questionnaires, intensive training and supervision of interviewers, and efficient data processing procedures.

SEASONAL ADJUSTMENT AND TREND ESTIMATION

17 Seasonally adjusted series are published in Tables 2, 4 to 9, and 14. Seasonal factors have previously been reviewed annually to take account of each additional year's original data. The results of the latest review were used to compile the seasonally adjusted and trend estimates given in this publication. Information about the last annual review of seasonal factors was published in a feature article in the February 2003 issue of *Labour Force, Australia* (cat no. 6203.0). From the December 2003 issue of this publication, the ABS will replace this process with concurrent seasonal adjustment, as explained under 'Forthcoming Changes' on page 3 of this issue.

18 Seasonal adjustment is a means of removing the estimated effects of normal seasonal variation from the series so that the effects of other influences on the series can be more clearly recognised. Seasonal adjustment does not aim to remove the irregular or non-seasonal influences which may be present in any particular month. This means that month-to-month movements of the seasonally adjusted estimates may not be reliable indicators of trend behaviour. For example, irregular factors unrelated to the trend account for more than half the seasonally adjusted movement with the following frequency:

Employment: 6 in 10 monthly movements

Unemployment: 8 in 10 monthly movements

Unemployment rate: 7 in 10 monthly movements

Participation rate: 9 in 10 monthly movements.

19 The smoothing of seasonally adjusted series reduces the impact of the irregular component of the seasonally adjusted series, and creates trend estimates. These trend estimates are derived by applying a 13-term Henderson-weighted moving average to all months except the last six. The last six monthly trend estimates are obtained by applying surrogates of the Henderson average to the seasonally adjusted series. Trend series are used to analyse the underlying behaviour of the series over time. These are published in tables 1, 4 to 11, and 13.

20 While this smoothing technique enables estimates to be produced for the latest month, it does result in revisions to the most recent months as additional observations become available. Generally, subsequent revisions become smaller, and after three months have a negligible impact on the series. There will also be revisions as a result of the annual review of seasonal factors.

EXPLANATORY NOTES *continued*

SEASONAL ADJUSTMENT AND TREND ESTIMATION *continued*

21 Trend estimates are published for the Northern Territory in table 10 and for the Australian Capital Territory in table 11. Unadjusted series for the two territories have shown, historically, a high degree of variability, which can lead to considerable revisions to the seasonally adjusted estimates after each annual seasonal factor re-analysis. Seasonally adjusted estimates are not currently published for the two Territories. The most recent six months trend estimates are subject to revision. For the three most recent months, the revision may be relatively large. Inferences about trends drawn from smoothed seasonally adjusted (trend) estimates for months earlier than the latest three months are unlikely to be affected by month to month revisions. They may be affected by revision resulting from the annual re-analysis of seasonal factors.

22 For further information, see *A Guide to Interpreting Time Series—Monitoring 'Trends': an Overview* (cat. no. 1348.0) or contact the Assistant Director, Time Series Analysis on (02) 6252 6345.

RELATED PUBLICATIONS

23 Users may also wish to refer to *Australian Labour Market Statistics* (cat. no. 6105.0). This publication contains additional tables and a detailed list of related publications. For further information about this publication, please contact the Assistant Director, Labour Market Statistics on (02) 6252 7636.

24 ABS Information about the labour market can be found on the Labour theme page on the ABS web site <<http://www.abs.gov.au>> (Themes—People, Labour), or from ABS Bookshops.

25 Current publications and other products released by the ABS are listed in the *Catalogue of Publications and Products* (cat. no. 1101.0). The Catalogue is available from any ABS office or the ABS web site <<http://www.abs.gov.au>> (Products and Services). The ABS also issues a daily Release Advice on the web site (Information on Releases) which details products to be released in the week ahead.

DATA AVAILABLE ON REQUEST

26 As well as the statistics included in this and related publications, the ABS may have other relevant data available. Inquiries should be made to Craig Blair on (02) 6252 6525 or to any ABS office.

EFFECTS OF ROUNDING

27 Estimates have been rounded and discrepancies may occur between sums of the component items and totals.

28 Estimates of movement shown in this publication are obtained by taking the difference of unrounded estimates. The movement estimate is then rounded to one decimal place. Therefore where a discrepancy occurs between the reported movement and the difference of the rounded estimates, the reported movement will be more accurate.

SYMBOLS AND OTHER USAGES

29 SYMBOLS AND OTHER USAGES
pts percentage points

STANDARD ERRORS

STANDARD ERRORS

The estimates in this publication are based on information gained from the occupants of a sample survey of dwellings. Because the entire population is not surveyed, the published estimates are subject to sampling error. The most common way of quantifying such sampling error is to calculate the standard error for the published estimate or statistic.

LEVEL ESTIMATES

To illustrate, let us say the published level estimate for employed persons aged 15 to 19 is 700,000. The calculated standard error in this case is 9,800. The standard error is then used to interpret the level estimate of 700,000. For instance, the standard error of 9,800 indicates that:

- There are approximately two chances in three that the real value falls within the range 690,200 to 709,800 ($700,000 \pm 9,800$)
- There are approximately nineteen chances in twenty that the real value falls within the range 680,400 to 719,600 ($700,000 \pm 19,600$).

The real value in this case is the result we would obtain if we could enumerate the total population.

The following table shows the standard errors for this month's level estimates.

										AUSTRALIA		
											
										NSW	Vic.	Qld
										SA	WA	Tas.
										NT	ACT	
										Males	Females	Persons
Aged 15 and over												
Employed												
Full time	'000	18.8	14.2	11.1	5.1	5.5	1.9	1.2	1.8	21.8	16.0	29.0
Part time	'000	10.7	8.9	7.9	3.7	4.1	1.4	0.9	1.2	10.3	14.8	17.0
Total	'000	22.8	17.1	12.7	5.9	6.1	2.1	1.4	2.1	24.1	20.9	38.9
Unemployed												
Looking for f/t work	'000	5.0	3.8	3.7	1.8	2.1	0.8	0.4	0.4	6.5	5.7	8.0
Looking for p/t work	'000	3.6	2.7	2.3	1.1	1.4	0.4	0.2	0.3	3.6	4.5	5.3
Total	'000	5.5	4.2	4.1	2.0	2.3	0.8	0.4	0.5	7.0	6.7	8.9
Labour force	'000	23.6	17.6	12.9	6.0	6.2	2.2	1.4	2.1	25.0	21.6	41.0
Not in labour force	'000	17.2	13.1	10.3	5.0	5.1	1.9	1.0	1.4	15.8	19.2	25.6
Unemployment rate												
Looking for f/t work	%	0.2	0.2	0.3	0.3	0.3	0.5	0.5	0.3	0.1	0.2	0.1
Looking for p/t work	%	0.4	0.4	0.4	0.5	0.5	0.6	0.8	0.7	0.4	0.2	0.2
Total	%	0.2	0.2	0.2	0.3	0.2	0.4	0.4	0.3	0.1	0.1	0.1
Participation rate	%	0.4	0.4	0.4	0.5	0.4	0.6	1.0	0.8	0.3	0.3	0.3
Aged 15 - 19												
Employed												
Full time	'000	4.1	2.8	3.2	1.4	1.8	0.6	0.4	0.4	5.4	4.4	6.4
Part time	'000	5.1	4.2	4.0	1.7	2.1	0.7	0.4	0.6	6.1	6.8	8.4
Total	'000	5.9	4.6	4.9	2.1	2.6	0.8	0.5	0.7	7.5	7.6	9.8
Unemployed												
Looking for f/t work	'000	2.5	1.7	1.5	0.8	1.1	0.3	0.2	0.3	2.9	2.7	3.8
Looking for p/t work	'000	2.5	1.9	1.6	0.8	1.0	0.3	0.1	0.3	2.8	2.9	3.8
Total	'000	3.3	2.3	2.1	1.0	1.4	0.4	0.2	0.3	3.8	3.8	4.9
Labour force	'000	6.2	4.9	5.1	2.2	2.7	0.9	0.5	0.7	8.0	8.0	10.4
Not in labour force	'000	5.8	4.6	3.8	1.9	2.3	0.8	0.6	0.6	7.2	6.9	9.2
Unemployment rate												
Looking for f/t work	%	2.9	3.4	2.2	3.5	2.9	3.6	5.0	7.3	1.7	2.5	1.3
Looking for p/t work	%	1.6	1.4	1.4	2.0	1.9	2.6	3.7	2.3	1.2	1.0	0.7
Total	%	1.3	1.3	1.2	1.7	1.5	2.0	2.9	2.2	1.0	0.9	0.6
Participation rate	%	1.4	1.4	1.9	2.1	1.9	2.6	3.5	3.1	1.1	1.2	0.8
Unemployment to population ratio — looking for f/t work	%	0.6	0.5	0.5	0.8	0.7	1.0	1.1	1.1	0.4	0.4	0.3

STANDARD ERRORS *continued*

MOVEMENT ESTIMATES

The following example illustrates how to use the standard error to interpret a movement estimate. Let us say that one month the published level estimate for females employed part time in Australia is 1,890,000; the next month the published level estimate is 1,900,000. The calculated standard error for the movement estimate is 10,300. The standard error is then used to interpret the published movement estimate of 10,000. For instance, the standard error of 10,300 indicates that:

- There are approximately two chances in three that the real movement between the two months falls within the range -300 to 20,300 (10,000 + or - 10,300)
- There are approximately nineteen chances in twenty that the real movement falls within the range -10,600 to 30,600 (10,000 + or - 20,600).

The following table shows the standard errors for this month's movement estimates.

		AUSTRALIA										
		NSW	Vic.	Qld	SA	WA	Tas.	NT	ACT	Males	Females	Persons
Aged 15 and over												
Employed												
Full time	'000	10.0	7.6	6.9	3.2	3.9	1.3	1.1	1.0	14.2	11.2	16.4
Part time	'000	7.2	5.6	5.1	2.4	2.9	1.0	0.7	0.8	7.6	10.5	11.8
Total	'000	11.1	8.6	7.8	3.6	4.4	1.4	1.2	1.1	15.0	13.9	18.5
Unemployed												
Looking for f/t work	'000	3.8	2.8	2.7	1.3	1.6	0.5	0.4	0.3	5.1	4.4	6.0
Looking for p/t work	'000	2.6	2.1	1.8	0.8	1.1	0.3	0.2	0.3	2.8	3.5	4.1
Total	'000	4.2	3.2	2.9	1.4	1.7	0.6	0.4	0.4	5.4	5.1	6.7
Labour force	'000	11.3	8.7	7.9	3.7	4.5	1.5	1.2	1.2	15.3	14.1	18.9
Not in labour force	'000	9.5	7.3	6.4	3.1	3.6	1.3	0.9	0.9	11.1	13.0	15.5
Unemployment rate												
Looking for f/t work	%	0.2	0.2	0.2	0.2	0.2	0.3	0.5	0.3	0.1	0.2	0.1
Looking for p/t work	%	0.3	0.3	0.3	0.4	0.4	0.5	0.8	0.5	0.3	0.2	0.1
Total	%	0.1	0.1	0.1	0.2	0.2	0.3	0.4	0.2	0.1	0.1	0.1
Participation rate	%	0.2	0.2	0.3	0.3	0.3	0.4	0.9	0.5	0.2	0.2	0.1
Aged 15 - 19												
Employed												
Full time	'000	3.1	2.1	2.3	1.0	1.4	0.5	0.3	0.3	4.2	3.4	4.9
Part time	'000	3.9	3.1	2.8	1.2	1.6	0.5	0.3	0.5	4.7	5.2	6.3
Total	'000	4.4	3.4	3.3	1.4	1.9	0.6	0.4	0.5	5.7	5.7	7.3
Unemployed												
Looking for f/t work	'000	2.0	1.3	1.4	0.7	0.9	0.3	0.2	0.2	2.5	2.2	3.0
Looking for p/t work	'000	2.0	1.6	1.4	0.6	0.8	0.3	0.1	0.2	2.3	2.5	3.1
Total	'000	2.5	1.8	1.7	0.9	1.1	0.3	0.2	0.3	3.1	2.9	3.8
Labour force	'000	4.7	3.6	3.5	1.5	2.0	0.6	0.5	0.5	6.0	6.0	7.7
Not in labour force	'000	4.4	3.4	2.7	1.3	1.7	0.6	0.5	0.4	5.4	5.2	6.8
Unemployment rate												
Looking for f/t work	%	2.2	2.8	2.0	2.9	2.4	3.0	4.7	5.8	1.4	2.1	1.1
Looking for p/t work	%	1.3	1.1	1.2	1.7	1.6	2.0	3.2	1.9	1.0	0.8	0.6
Total	%	1.0	1.0	0.9	1.4	1.2	1.6	2.6	1.7	0.8	0.7	0.5
Participation rate	%	1.0	1.1	1.3	1.5	1.4	1.8	3.1	2.2	0.9	0.9	0.6
Unemployment to population ratio — looking for f/t work												
	%	0.4	0.4	0.5	0.7	0.6	0.8	1.2	0.9	0.4	0.3	0.2

GLOSSARY

Actively looking for work	Includes writing, telephoning or applying in person to an employer for work; answering an advertisement for a job; checking factory noticeboards or the touchscreens at the Centrelink offices; being registered with Centrelink as a jobseeker; checking or registering with any other employment agency; advertising or tendering for work; and contacting friends or relatives.
Attending full-time education	Persons aged 15 to 24 enrolled at secondary or high school or enrolled as a full time student at a Technical and Further Education (TAFE) college, university, or other educational institution in the reference week.
Attending school	Persons aged 15 to 19 years enrolled at secondary or high school in the reference week.
Attending tertiary educational institution full time	Persons aged 15 to 24 years enrolled full time at a TAFE college, university, or other educational institution in the reference week, except those persons aged 15 to 19 years who were still attending school.
Civilian population aged 15 years and over	All usual residents of Australia aged 15 years and over except members of the permanent defence forces, certain diplomatic personnel of overseas governments customarily excluded from census and estimated population counts, overseas residents in Australia, and members of non-Australian defence forces (and their dependants) stationed in Australia.
Employed	<p>All persons aged 15 years and over who, during the reference week:</p> <ul style="list-style-type: none"> ■ worked for one hour or more for pay, profit, commission or payment in kind in a job or business, or on a farm (comprising employees, employers and own account workers); or ■ worked for one hour or more without pay in a family business or on a farm (i.e. contributing family workers); or ■ were employees who had a job but were not at work and were: <ul style="list-style-type: none"> ■ away from work for less than four weeks up to the end of the reference week; or ■ away from work for more than four weeks up to the end of the reference week and received pay for some or all of the four week period to the end of the reference week; or ■ away from work as a standard work or shift arrangement; or ■ on strike or locked out; or ■ on workers' compensation and expected to return to their job; or ■ were employers or own account workers, who had a job, business or farm, but were not at work.
Employment to population ratio	For any group, the number of employed persons expressed as a percentage of the civilian population in the same group.
Full-time workers	Employed persons who usually worked 35 hours or more a week (in all jobs) and those who, although usually working less than 35 hours a week, worked 35 hours or more during the reference week.
Labour force	For any group, persons who were employed or unemployed, as defined.
Labour force status	A classification of the civilian population aged 15 years and over into employed, unemployed or not in the labour force, as defined. The definitions conform closely to the international standard definitions adopted by the International Conferences of Labour Statisticians.
Not in the labour force	Persons who were not in the categories employed or unemployed as defined.
Participation rate	For any group, the labour force expressed as a percentage of the civilian population aged 15 years and over in the same group.
Part-time workers	Employed persons who usually worked less than 35 hours a week (in all jobs) and either did so during the reference week, or were not at work in the reference week.

GLOSSARY *continued*

Seasonally adjusted series	A time series of estimates with the estimated effects of normal seasonal variation removed. See Explanatory Notes 17 and 18 for more detail.
Trend series	A smoothed seasonally adjusted series of estimates. See Explanatory Notes 19 to 21 for more detail.
Unemployed	Persons aged 15 years and over who were not employed during the reference week, and: <ul style="list-style-type: none">■ had actively looked for full-time or part-time work at any time in the four weeks up to the end of the reference week and:<ul style="list-style-type: none">■ were available for work in the reference week; or■ were waiting to start a new job within four weeks from the end of the reference week and could have started in the reference week if the job had been available then.
Unemployed looking for full-time work	Unemployed persons who: <ul style="list-style-type: none">■ actively looked for full-time work and were available for work in the reference week; or■ actively looked for work and were not available for work in the reference week because they were waiting to start a new full-time job.
Unemployed looking for part-time work	Unemployed persons who: <ul style="list-style-type: none">■ actively looked for part-time work only and were available for work in the reference week; or■ actively looked for work and were not available for work in the reference week because they were waiting to start a new part-time job.
Unemployment rate	For any group, the number of unemployed persons expressed as a percentage of the labour force in the same group.
Unemployment to population ratio	For any group, the number of unemployed persons expressed as a percentage of the civilian population in the same group.

FOR MORE INFORMATION . . .

<i>INTERNET</i>	www.abs.gov.au the ABS web site is the best place to start for access to summary data from our latest publications, information about the ABS, advice about upcoming releases, our catalogue, and Australia Now—a statistical profile.
<i>LIBRARY</i>	A range of ABS publications is available from public and tertiary libraries Australia-wide. Contact your nearest library to determine whether it has the ABS statistics you require, or visit our web site for a list of libraries.
<i>CPI INFOLINE</i>	For current and historical Consumer Price Index data, call 1902 981 074 (call cost 77c per minute).
<i>DIAL-A-STATISTIC</i>	For the latest figures for National Accounts, Balance of Payments, Labour Force, Average Weekly Earnings, Estimated Resident Population and the Consumer Price Index call 1900 986 400 (call cost 77c per minute).

INFORMATION SERVICE

Data already published that can be provided within five minutes will be free of charge. Our information consultants can also help you to access the full range of ABS information—ABS user pays services can be tailored to your needs, time frame and budget. Publications may be purchased. Specialists are on hand to help you with analytical or methodological advice.

<i>PHONE</i>	1300 135 070
<i>EMAIL</i>	client.services@abs.gov.au
<i>FAX</i>	1300 135 211
<i>POST</i>	Client Services, ABS, GPO Box 796, Sydney NSW 2001

WHY NOT SUBSCRIBE?

ABS subscription services provide regular, convenient and prompt deliveries of ABS publications and products as they are released. Email delivery of monthly and quarterly publications is available.

<i>PHONE</i>	1300 366 323
<i>EMAIL</i>	subscriptions@abs.gov.au
<i>FAX</i>	03 9615 7848
<i>POST</i>	Subscription Services, ABS, GPO Box 2796Y, Melbourne Vic 3001



2620200011033

ISSN 1448 2819

RRP \$22.00